

Datasheet for ABIN389927

## anti-TERT antibody (pSer1125)



[Go to Product page](#)

### 1 Image

#### Overview

Quantity:	400 µL
Target:	TERT
Binding Specificity:	pSer1125
Reactivity:	Human
Host:	Rabbit
Clonality:	Polyclonal
Conjugate:	This TERT antibody is un-conjugated
Application:	Dot Blot (DB)

#### Product Details

Immunogen:	This TERT Antibody is generated from rabbits immunized with a KLH conjugated synthetic phosphopeptide corresponding to amino acid residues surrounding S1125 of human TERT.
Clone:	RB15255
Isotype:	Ig Fraction
Purification:	This antibody is purified through a protein A column, followed by peptide affinity purification.

#### Target Details

Target:	TERT
Alternative Name:	TERT ( <a href="#">TERT Products</a> )
Background:	Telomerase is a ribonucleoprotein polymerase that maintains telomere ends by addition of the

## Target Details

telomere repeat TTAGGG. The enzyme consists of a protein component with reverse transcriptase activity, and an RNA component which serves as a template for the telomere repeat. Telomerase expression plays a role in cellular senescence, as it is normally repressed in postnatal somatic cells resulting in progressive shortening of telomeres. Deregulation of telomerase expression in somatic cells may be involved in oncogenesis. Studies in mouse suggest that telomerase also participates in chromosomal repair, since de novo synthesis of telomere repeats may occur at double-stranded breaks.

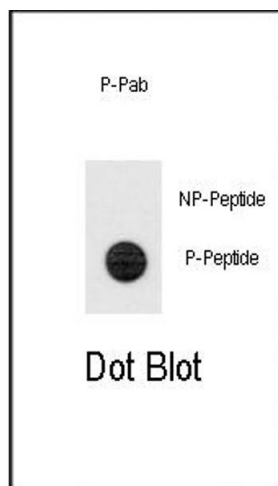
Molecular Weight:	126997
Gene ID:	7015
NCBI Accession:	<a href="#">NP_001180305</a> , <a href="#">NP_937983</a>
UniProt:	<a href="#">O14746</a>
Pathways:	<a href="#">Telomere Maintenance</a>

## Application Details

Application Notes:	DB: 1:500
Restrictions:	For Research Use only

## Handling

Format:	Liquid
Buffer:	Purified polyclonal antibody supplied in PBS with 0.09 % (W/V) sodium azide.
Preservative:	Sodium azide
Precaution of Use:	This product contains Sodium azide: a POISONOUS AND HAZARDOUS SUBSTANCE which should be handled by trained staff only.
Storage:	4 °C,-20 °C
Storage Comment:	Maintain refrigerated at 2-8 °C for up to 6 months. For long term storage store at -20 °C in small aliquots to prevent freeze-thaw cycles.
Expiry Date:	6 months



#### Dot Blot

**Image 1.** Dot blot analysis of anti-Phospho-TERT-p Antibody (ABIN389927 and ABIN2839747) on nitrocellulose membrane. 50 ng of Phospho-peptide or Non Phospho-peptide per dot were adsorbed. Antibody working concentrations are 0.5 µg per ml.