

Datasheet for ABIN389930  
**anti-ANTXR1 antibody (pTyr382)**[Go to Product page](#)

## 1 Image

## Overview

Quantity:	400 µL
Target:	ANTXR1
Binding Specificity:	pTyr382
Reactivity:	Human
Host:	Rabbit
Clonality:	Polyclonal
Conjugate:	This ANTXR1 antibody is un-conjugated
Application:	Dot Blot (DB)

## Product Details

Immunogen:	This ANTXR1 Antibody is generated from rabbits immunized with a KLH conjugated synthetic phosphopeptide corresponding to amino acid residues surrounding Y382 of human ANTXR1.
Clone:	RB15324
Isotype:	Ig Fraction
Predicted Reactivity:	M, Rat
Purification:	This antibody is purified through a protein A column, followed by peptide affinity purification.

## Target Details

Target:	ANTXR1
Alternative Name:	ANTXR1 ( <a href="#">ANTXR1 Products</a> )

## Target Details

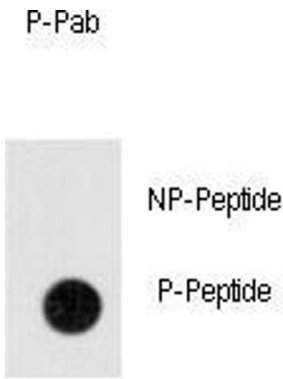
Background:	ANTXR1 is a type I transmembrane protein and is a tumor-specific endothelial marker that has been implicated in colorectal cancer. This protein has been shown to also be a docking protein or receptor for Bacillus anthracis toxin, the causative agent of the disease, anthrax. The binding of the protective antigen (PA) component, of the tripartite anthrax toxin, to this receptor protein mediates delivery of toxin components to the cytosol of cells. Once inside the cell, the other two components of anthrax toxin, edema factor (EF) and lethal factor (LF) disrupt normal cellular processes.
Molecular Weight:	62789
Gene ID:	84168
NCBI Accession:	<a href="#">NP_060623</a> , <a href="#">NP_115584</a> , <a href="#">NP_444262</a>
UniProt:	<a href="#">Q9H6X2</a>

## Application Details

Application Notes:	DB: 1:500
Restrictions:	For Research Use only

## Handling

Format:	Liquid
Buffer:	Purified polyclonal antibody supplied in PBS with 0.09 % (W/V) sodium azide.
Preservative:	Sodium azide
Precaution of Use:	This product contains Sodium azide: a POISONOUS AND HAZARDOUS SUBSTANCE which should be handled by trained staff only.
Storage:	4 °C,-20 °C
Storage Comment:	Maintain refrigerated at 2-8 °C for up to 6 months. For long term storage store at -20 °C in small aliquots to prevent freeze-thaw cycles.
Expiry Date:	6 months



Dot Blot

**Dot Blot**

**Image 1.** Dot blot analysis of anti-Phospho-ANTXR1-p Antibody (ABIN389930 and ABIN2839748) on nitrocellulose membrane. 50 ng of Phospho-peptide or Non Phospho-peptide per dot were adsorbed. Antibody working concentrations are 0.5 µg per ml.