

Datasheet for ABIN389948
anti-NOMO1 antibody (pSer1205)[Go to Product page](#)

1 Image

Overview

Quantity:	400 µL
Target:	NOMO1
Binding Specificity:	pSer1205
Reactivity:	Human
Host:	Rabbit
Clonality:	Polyclonal
Conjugate:	This NOMO1 antibody is un-conjugated
Application:	Dot Blot (DB)

Product Details

Immunogen:	This NOMO1 Antibody is generated from rabbits immunized with a KLH conjugated synthetic phosphopeptide corresponding to amino acid residues surrounding S1205 of human NOMO1.
Clone:	RB15368
Isotype:	Ig Fraction
Purification:	This antibody is purified through a protein A column, followed by peptide affinity purification.

Target Details

Target:	NOMO1
Alternative Name:	NOMO1 (NOMO1 Products)
Background:	NOMO1 was originally thought to be related to the collagenase family. The gene encoding

Target Details

NOM01 is one of three highly similar genes in a region of duplication located on the p arm of chromosome 16. These three genes encode closely related proteins that may have the same function. The protein encoded by one of these genes has been identified as part of a protein complex that participates in the Nodal signaling pathway during vertebrate development.

Molecular Weight: 134324

Gene ID: 23420

NCBI Accession: [NP_055102](#)

UniProt: [Q15155](#)

Application Details

Application Notes: DB: 1:500

Restrictions: For Research Use only

Handling

Format: Liquid

Buffer: Purified polyclonal antibody supplied in PBS with 0.09 % (W/V) sodium azide.

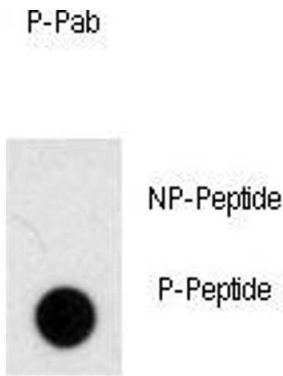
Preservative: Sodium azide

Precaution of Use: This product contains Sodium azide: a POISONOUS AND HAZARDOUS SUBSTANCE which should be handled by trained staff only.

Storage: 4 °C, -20 °C

Storage Comment: Maintain refrigerated at 2-8 °C for up to 6 months. For long term storage store at -20 °C in small aliquots to prevent freeze-thaw cycles.

Expiry Date: 6 months



Dot Blot

Dot Blot

Image 1. Dot blot analysis of anti-Phospho-NOM01-p Antibody (ABIN389948 and ABIN2839757) on nitrocellulose membrane. 50 ng of Phospho-peptide or Non Phospho-peptide per dot were adsorbed. Antibody working concentrations are 0.5 µg per ml.