

Datasheet for ABIN389959
anti-OSR1 antibody (pThr310)[Go to Product page](#)

1 Image

Overview

Quantity:	400 µL
Target:	OSR1
Binding Specificity:	pThr310
Reactivity:	Human
Host:	Rabbit
Clonality:	Polyclonal
Conjugate:	This OSR1 antibody is un-conjugated
Application:	Dot Blot (DB)

Product Details

Immunogen:	This OSR1 Antibody is generated from rabbits immunized with a KLH conjugated synthetic phosphopeptide corresponding to amino acid residues surrounding T310 of human OSR1.
Clone:	RB15538
Isotype:	Ig Fraction
Purification:	This antibody is purified through a protein A column, followed by peptide affinity purification.

Target Details

Target:	OSR1
Alternative Name:	OSR1 (OSR1 Products)
Background:	Odd-skipped related I (Odd1) is a zinc finger protein homologous to the Drosophila Odd-skipped

Target Details

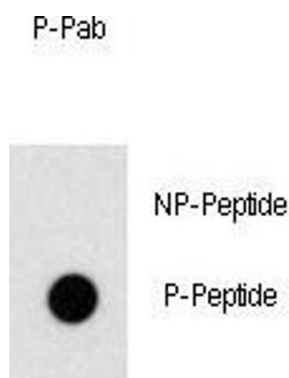
	class transcription factors that play critical roles in embryonic patterning and tissue morphogenesis.
Molecular Weight:	29611
Gene ID:	130497
NCBI Accession:	NP_660303
UniProt:	Q8TAX0
Pathways:	Tube Formation

Application Details

Application Notes:	DB: 1:500
Restrictions:	For Research Use only

Handling

Format:	Liquid
Buffer:	Purified polyclonal antibody supplied in PBS with 0.09 % (W/V) sodium azide.
Preservative:	Sodium azide
Precaution of Use:	This product contains Sodium azide: a POISONOUS AND HAZARDOUS SUBSTANCE which should be handled by trained staff only.
Storage:	4 °C,-20 °C
Storage Comment:	Maintain refrigerated at 2-8 °C for up to 6 months. For long term storage store at -20 °C in small aliquots to prevent freeze-thaw cycles.
Expiry Date:	6 months



Dot Blot

Dot Blot

Image 1. Dot blot analysis of anti-Phospho-OSR1-p Antibody (ABIN389959 and ABIN2839760) on nitrocellulose membrane. 50 ng of Phospho-peptide or Non Phospho-peptide per dot were adsorbed. Antibody working concentrations are 0.5 µg per ml.