



Datasheet for ABIN389978

anti-MECP2 antibody (pSer80)



[Go to Product page](#)

1 Image

1 Publication

Overview

Quantity:	400 µL
Target:	MECP2
Binding Specificity:	pSer80
Reactivity:	Human
Host:	Rabbit
Clonality:	Polyclonal
Conjugate:	This MECP2 antibody is un-conjugated
Application:	Dot Blot (DB)

Product Details

Immunogen:	This MeCP2 Antibody is generated from rabbits immunized with a KLH conjugated synthetic phosphopeptide corresponding to amino acid residues surrounding S80 of human MeCP2.
Clone:	RB27934
Isotype:	Ig Fraction
Predicted Reactivity:	Pr, M, Rat
Purification:	This antibody is purified through a protein A column, followed by peptide affinity purification.

Target Details

Target:	MECP2
Alternative Name:	MeCP2 (MECP2 Products)

Target Details

Background:	DNA methylation is the major modification of eukaryotic genomes and plays an essential role in mammalian development. Human proteins MECP2, MBD1, MBD2, MBD3, and MBD4 comprise a family of nuclear proteins related by the presence in each of a methyl-CpG binding domain (MBD). Each of these proteins, with the exception of MBD3, is capable of binding specifically to methylated DNA. MECP2, MBD1 and MBD2 can also repress transcription from methylated gene promoters. In contrast to other MBD family members, MECP2 is X-linked and subject to X inactivation. MECP2 is dispensible in stem cells, but is essential for embryonic development. MECP2 gene mutations are the cause of some cases of Rett syndrome, a progressive neurologic developmental disorder and one of the most common causes of mental retardation in females.
Molecular Weight:	52441
Gene ID:	4204
NCBI Accession:	NP_001104262 , NP_004983
UniProt:	P51608
Pathways:	Inositol Metabolic Process , Chromatin Binding , Synaptic Membrane

Application Details

Application Notes:	DB: 1:500
Restrictions:	For Research Use only

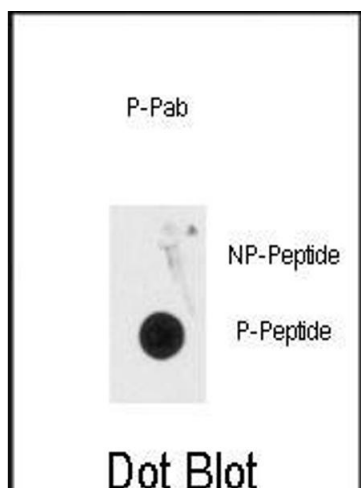
Handling

Format:	Liquid
Buffer:	Purified polyclonal antibody supplied in PBS with 0.09 % (W/V) sodium azide.
Preservative:	Sodium azide
Precaution of Use:	This product contains Sodium azide: a POISONOUS AND HAZARDOUS SUBSTANCE which should be handled by trained staff only.
Storage:	4 °C,-20 °C
Storage Comment:	Maintain refrigerated at 2-8 °C for up to 6 months. For long term storage store at -20 °C in small aliquots to prevent freeze-thaw cycles.
Expiry Date:	6 months

Publications

Product cited in: Bannon, Johnson, Michelhaugh, Hartley, Halter, David, Kapatos, Schmidt: "A molecular profile of cocaine abuse includes the differential expression of genes that regulate transcription, chromatin, and dopamine cell phenotype." in: **Neuropsychopharmacology : official publication of the American College of Neuropsychopharmacology**, Vol. 39, Issue 9, pp. 2191-9, (2014) ([PubMed](#)).

Images



Dot Blot

Image 1. Dot blot analysis of anti-Phospho-MeCP2-pS80 Antibody (ABIN389978 and ABIN2839768) on nitrocellulose membrane. 50 ng of Phospho-peptide or Non Phospho-peptide per dot were adsorbed. Antibody working concentrations are 0.5 µg per ml.