

Datasheet for ABIN389979
anti-IRS2 antibody (pTyr978)[Go to Product page](#)

1 Image

Overview

Quantity:	400 µL
Target:	IRS2
Binding Specificity:	pTyr978
Reactivity:	Human
Host:	Rabbit
Clonality:	Polyclonal
Conjugate:	This IRS2 antibody is un-conjugated
Application:	Dot Blot (DB)

Product Details

Immunogen:	This IRS2 Antibody is generated from rabbits immunized with a KLH conjugated synthetic phosphopeptide corresponding to amino acid residues surrounding Y978 of human IRS2.
Clone:	RB15626
Isotype:	Ig Fraction
Predicted Reactivity:	M
Purification:	This antibody is purified through a protein A column, followed by peptide affinity purification.

Target Details

Target:	IRS2
Alternative Name:	IRS2 (IRS2 Products)

Target Details

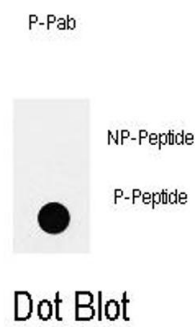
Background:	Insulin receptor substrate 2, a cytoplasmic signaling molecule that mediates effects of insulin, insulin-like growth factor 1, and other cytokines by acting as a molecular adaptor between diverse receptor tyrosine kinases and downstream effectors. This protein is phosphorylated by the insulin receptor tyrosine kinase upon receptor stimulation, as well as by an interleukin 4 receptor-associated kinase in response to IL4 treatment.
Gene ID:	8660
NCBI Accession:	NP_003740
UniProt:	Q9Y4H2
Pathways:	Fc-epsilon Receptor Signaling Pathway , EGFR Signaling Pathway , Neurotrophin Signaling Pathway , Positive Regulation of Peptide Hormone Secretion , Response to Growth Hormone Stimulus , Carbohydrate Homeostasis , Regulation of Carbohydrate Metabolic Process

Application Details

Application Notes:	DB: 1:500
Restrictions:	For Research Use only

Handling

Format:	Liquid
Buffer:	Purified polyclonal antibody supplied in PBS with 0.09 % (W/V) sodium azide.
Preservative:	Sodium azide
Precaution of Use:	This product contains Sodium azide: a POISONOUS AND HAZARDOUS SUBSTANCE which should be handled by trained staff only.
Storage:	4 °C,-20 °C
Storage Comment:	Maintain refrigerated at 2-8 °C for up to 6 months. For long term storage store at -20 °C in small aliquots to prevent freeze-thaw cycles.
Expiry Date:	6 months



Dot Blot

Image 1. Dot blot analysis of anti-Phospho-IRS2-p Antibody (ABIN389979 and ABIN2839769) on nitrocellulose membrane. 50 ng of Phospho-peptide or Non Phospho-peptide per dot were adsorbed. Antibody working concentrations are 0.5 µg per ml.