



[Go to Product page](#)

Datasheet for ABIN389998

## anti-SLC29A1 antibody (pSer254)

### 1 Image

#### Overview

Quantity:	400 µL
Target:	SLC29A1
Binding Specificity:	pSer254
Reactivity:	Human
Host:	Rabbit
Clonality:	Polyclonal
Conjugate:	This SLC29A1 antibody is un-conjugated
Application:	Dot Blot (DB)

#### Product Details

Immunogen:	This ENT1(Slc29a1) Antibody is generated from rabbits immunized with a KLH conjugated synthetic phosphopeptide corresponding to amino acid residues surrounding S254 of human ENT1(Slc29a1).
Clone:	RB16657
Isotype:	Ig Fraction
Purification:	This antibody is purified through a protein A column, followed by peptide affinity purification.

#### Target Details

Target:	SLC29A1
Alternative Name:	ENT1 (Slc29a1) ( <a href="#">SLC29A1 Products</a> )

## Target Details

---

Background:	ENT1 is a member of the equilibrative nucleoside transporter family. The protein is categorized as an equilibrative (as opposed to concentrative) transporter that is sensitive to inhibition by nitrobenzylthioinosine (NBMPR). Nucleoside transporters are required for nucleotide synthesis in cells that lack de novo nucleoside synthesis pathways, and are also necessary for the uptake of cytotoxic nucleosides used for cancer and viral chemotherapies.
Molecular Weight:	50219
Gene ID:	2030
NCBI Accession:	<a href="#">NP_001071642</a> , <a href="#">NP_001071643</a> , <a href="#">NP_001071644</a> , <a href="#">NP_001071645</a> , <a href="#">NP_004946</a>
UniProt:	<a href="#">Q99808</a>
Pathways:	<a href="#">Carbohydrate Homeostasis</a> , <a href="#">Synaptic Membrane</a>

## Application Details

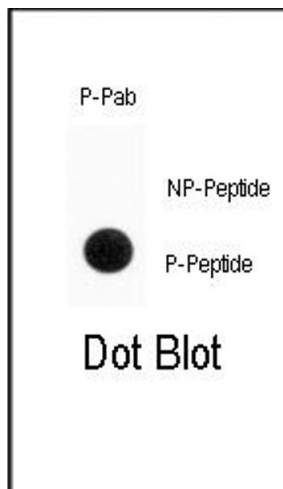
---

Application Notes:	DB: 1:500
Restrictions:	For Research Use only

## Handling

---

Format:	Liquid
Buffer:	Purified polyclonal antibody supplied in PBS with 0.09 % (W/V) sodium azide.
Preservative:	Sodium azide
Precaution of Use:	This product contains Sodium azide: a POISONOUS AND HAZARDOUS SUBSTANCE which should be handled by trained staff only.
Storage:	4 °C, -20 °C
Storage Comment:	Maintain refrigerated at 2-8 °C for up to 6 months. For long term storage store at -20 °C in small aliquots to prevent freeze-thaw cycles.
Expiry Date:	6 months



### Dot Blot

**Image 1.** Dot blot analysis of anti-Phospho-ENT1(Slc29a1)-p Antibody (ABIN389998 and ABIN2839775) on nitrocellulose membrane. 50 ng of Phospho-peptide or Non Phospho-peptide per dot were adsorbed. Antibody working concentrations are 0.5 µg per ml.