

Datasheet for ABIN389999  
**anti-HIPK2 antibody (pTyr361)**[Go to Product page](#)

## 1 Image

## Overview

Quantity:	400 µL
Target:	HIPK2
Binding Specificity:	pTyr361
Reactivity:	Human
Host:	Rabbit
Clonality:	Polyclonal
Conjugate:	This HIPK2 antibody is un-conjugated
Application:	Dot Blot (DB)

## Product Details

Immunogen:	This HIPK2 Antibody is generated from rabbits immunized with a KLH conjugated synthetic phosphopeptide corresponding to amino acid residues surrounding Y361 of human HIPK2.
Clone:	RB16666
Isotype:	Ig Fraction
Predicted Reactivity:	M, Rat
Purification:	This antibody is purified through a protein A column, followed by peptide affinity purification.

## Target Details

Target:	HIPK2
Alternative Name:	HIPK2 ( <a href="#">HIPK2 Products</a> )

## Target Details

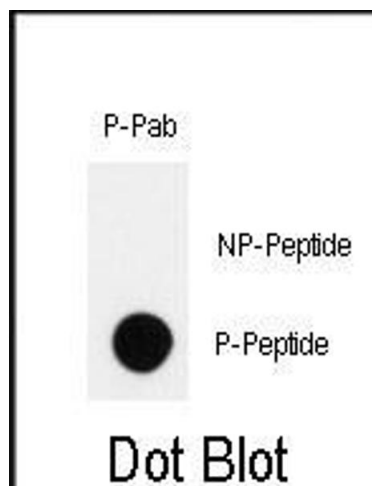
Background:	HIPK2 is a conserved serine/threonine nuclear kinase that interacts with homeodomain transcription factors.
Molecular Weight:	130966
Gene ID:	28996
NCBI Accession:	<a href="#">NP_001106710</a> , <a href="#">NP_073577</a>
UniProt:	<a href="#">Q9H2X6</a>
Pathways:	<a href="#">Cell Division Cycle</a>

## Application Details

Application Notes:	DB: 1:500
Restrictions:	For Research Use only

## Handling

Format:	Liquid
Buffer:	Purified polyclonal antibody supplied in PBS with 0.09 % (W/V) sodium azide.
Preservative:	Sodium azide
Precaution of Use:	This product contains Sodium azide: a POISONOUS AND HAZARDOUS SUBSTANCE which should be handled by trained staff only.
Storage:	4 °C, -20 °C
Storage Comment:	Maintain refrigerated at 2-8 °C for up to 6 months. For long term storage store at -20 °C in small aliquots to prevent freeze-thaw cycles.
Expiry Date:	6 months



#### Dot Blot

**Image 1.** Dot blot analysis of anti-Phospho-HIPK2-p Antibody (ABIN389999 and ABIN2839776) on nitrocellulose membrane. 50 ng of Phospho-peptide or Non Phospho-peptide per dot were adsorbed. Antibody working concentrations are 0.5 µg per ml.