

Datasheet for ABIN390035
anti-KLF4 antibody (pSer254)



[Go to Product page](#)

2 Images

1 Publication

Overview

Quantity:	400 µL
Target:	KLF4
Binding Specificity:	pSer254
Reactivity:	Human
Host:	Rabbit
Clonality:	Polyclonal
Conjugate:	This KLF4 antibody is un-conjugated
Application:	Immunofluorescence (IF), Dot Blot (DB)

Product Details

Immunogen:	This KLF4 Antibody is generated from rabbits immunized with a KLH conjugated synthetic phosphopeptide corresponding to amino acid residues surrounding S254 of human KLF4.
Clone:	RB18931
Isotype:	Ig Fraction
Predicted Reactivity:	M
Purification:	This antibody is purified through a protein A column, followed by peptide affinity purification.

Target Details

Target:	KLF4
Alternative Name:	KLF4 (KLF4 Products)

Target Details

Background:	Kr
Molecular Weight:	54671
Gene ID:	9314
NCBI Accession:	NP_004226
UniProt:	O43474
Pathways:	Peptide Hormone Metabolism, Stem Cell Maintenance

Application Details

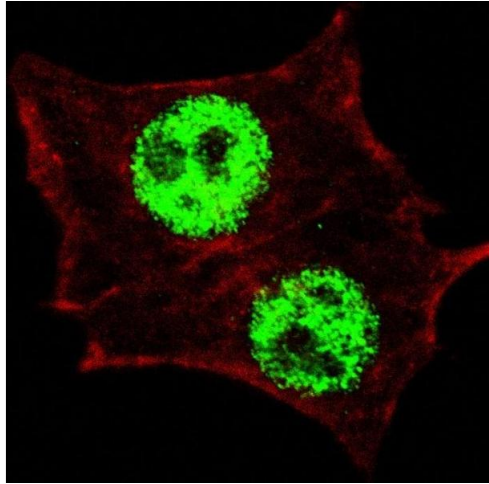
Application Notes:	IF: 1:10~50. DB: 1:500
Restrictions:	For Research Use only

Handling

Format:	Liquid
Buffer:	Purified polyclonal antibody supplied in PBS with 0.09 % (W/V) sodium azide.
Preservative:	Sodium azide
Precaution of Use:	This product contains Sodium azide: a POISONOUS AND HAZARDOUS SUBSTANCE which should be handled by trained staff only.
Storage:	4 °C,-20 °C
Storage Comment:	Maintain refrigerated at 2-8 °C for up to 6 months. For long term storage store at -20 °C in small aliquots to prevent freeze-thaw cycles.
Expiry Date:	6 months

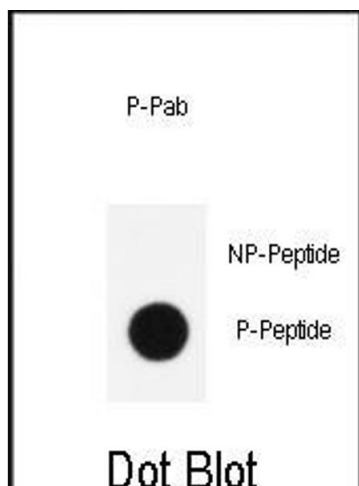
Publications

Product cited in:	Michael, Waters, LeMessurier, Samarasinghe, Song, Malik, Lew: "Airway Epithelial Repair by a Prebiotic Mannan Derived from <i>Saccharomyces cerevisiae</i> ." in: Journal of immunology research , Vol. 2017, pp. 8903982, (2018) (PubMed).
-------------------	--



Immunofluorescence

Image 1. Fluorescent confocal image of HeLa cells stained with (ABIN390035 and ABIN2839785) Phospho-KLF4-antibody. HeLa cells were fixed with 4 % PFA (20 min), permeabilized with Triton X-100 (0.2 %, 30 min), then incubated with (ABIN390035 and ABIN2839785) Phospho-KLF4- primary antibody (1:200, 2 h at room temperature). For secondary antibody, Alexa Fluor® 488 conjugated donkey anti-rabbit antibody (green) was used (1:1000, 1h). Cytoplasmic actin was counterstained with Alexa Fluor® 555 (red) conjugated Phalloidin (5.25 μ M, 25 min). Note the highly specific localization of the phosphorylated KLF4 immunoreactivity to the nuclei but not the nucleoli or the cytoplasm.



Dot Blot

Image 2. Dot blot analysis of anti-Phospho-KLF4- Antibody (ABIN390035 and ABIN2839785) on nitrocellulose membrane. 50 ng of Phospho-peptide or Non Phospho-peptide per dot were adsorbed. Antibody working concentrations are 0.5 μ g per ml.