

Datasheet for ABIN390057

anti-BACE2C antibody (C-Term)[Go to Product page](#)**2** Images

Overview

Quantity:	400 µL
Target:	BACE2C (BACE2 C)
Binding Specificity:	AA 310-339, C-Term
Reactivity:	Human
Host:	Rabbit
Clonality:	Polyclonal
Conjugate:	This BACE2C antibody is un-conjugated
Application:	Western Blotting (WB), Immunohistochemistry (Paraffin-embedded Sections) (IHC (p))

Product Details

Immunogen:	This BACE2C antibody is generated from rabbits immunized with a KLH conjugated synthetic peptide between 310-339 amino acids from the C-terminal region of human BACE2C.
Clone:	RB2126
Isotype:	Ig Fraction
Purification:	This antibody is prepared by Saturated Ammonium Sulfate (SAS) precipitation followed by dialysis against PBS.

Target Details

Target:	BACE2C (BACE2 C)
Alternative Name:	BACE2C (BACE2 C Products)

Target Details

Background: Amyloid-beta peptide aggregation is a signature of Alzheimer disease and a frequent complication of adult Down syndrome patients. Amyloid-beta is generated by proteolytic processing of the amyloid precursor protein (APP) by beta- and gamma-secretase at the N and C termini, respectively. Presenilin-1 is involved in the gamma-secretase activity. BACE is a transmembrane aspartyl protease with beta-secretase activity. BACE2, also termed ALP56 has 2 pepsin-like active centers, a signal sequence, a propeptide, and a long C-terminal extension including a transmembrane domain, with expression in a wide array of tissues. Northern blot analysis revealed low expression of 2.0- and 2.6-kb BACE2 transcripts in most fetal and adult tissues, with higher expression in adult colon, kidney, pancreas, placenta, prostate, stomach, and trachea. Low levels were also detected in brain, with somewhat higher expression in medulla and spinal cord. In situ hybridization analysis of rat brain found low-level BACE2 expression in contrast to BACE expression. The BACE2 expression pattern does not appear to be consistent with that of a beta-secretase. BACE2 has been mapped to 21q22.3, within the Down syndrome critical region.

Molecular Weight:	56180
Gene ID:	25825
NCBI Accession:	NP_036237 , NP_620476 , NP_620477
UniProt:	Q9Y5Z0

Application Details

Application Notes:	WB: 1:1000. IHC-P: 1:50~100
Restrictions:	For Research Use only

Handling

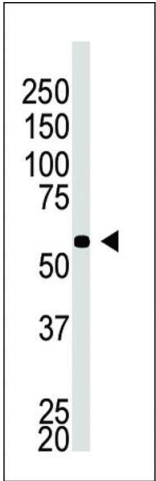
Format:	Liquid
Buffer:	Purified polyclonal antibody supplied in PBS with 0.09 % (W/V) sodium azide.
Preservative:	Sodium azide
Precaution of Use:	This product contains Sodium azide: a POISONOUS AND HAZARDOUS SUBSTANCE which should be handled by trained staff only.
Storage:	4 °C,-20 °C
Storage Comment:	Maintain refrigerated at 2-8 °C for up to 6 months. For long term storage store at -20 °C in small

Handling

aliquots to prevent freeze-thaw cycles.

Expiry Date: 6 months

Images



Immunohistochemistry (Paraffin-embedded Sections)

Image 1. Formalin-fixed and paraffin-embedded human cancer tissue reacted with the primary antibody, which was peroxidase-conjugated to the secondary antibody, followed by AEC staining. This data demonstrates the use of this antibody for immunohistochemistry, clinical relevance has not been evaluated. BC = breast carcinoma, HC = hepatocarcinoma.

Western Blotting

Image 2. The anti-BACE2C C-term Pab (ABIN390057 and ABIN2837930) is used in Western blot to detect BACE2C in A549 cell lysate.