

Datasheet for ABIN390071  
**anti-EPR1 antibody (C-Term)**[Go to Product page](#)

## 1 Image

## Overview

Quantity:	400 µL
Target:	EPR1
Binding Specificity:	AA 308-337, C-Term
Reactivity:	Human
Host:	Rabbit
Clonality:	Polyclonal
Conjugate:	This EPR1 antibody is un-conjugated
Application:	Western Blotting (WB)

## Product Details

Immunogen:	This EPR1 antibody is generated from rabbits immunized with a KLH conjugated synthetic peptide between 308-337 amino acids from the C-terminal region of human EPR1.
Clone:	RB1796
Isotype:	Ig Fraction
Purification:	This antibody is prepared by Saturated Ammonium Sulfate (SAS) precipitation followed by dialysis against PBS.

## Target Details

Target:	EPR1
Alternative Name:	EPR1 ( <a href="#">EPR1 Products</a> )

## Target Details

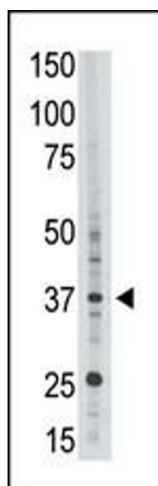
Background:	Cellular receptors for blood proteases regulate chemotaxis, extracellular proteolysis, and growth behavior of normal and malignant cells. Effector cell protease receptor-1 (EPR1) is a receptor for the coagulation protease factor Xa. EPR1 is characterized by a cysteine-rich extracellular module, a single membrane-spanning domain, and a serine-rich cytoplasmic tail featuring at least 15 potential phosphorylation sites. EPR1 also contains 2 N-linked glycosylation sites, 4 O-linked glycosylation sites, and a chondroitin sulfate attachment site, which may provide anchoring for carbohydrate chains, EPR1 transfectants bind to factor Xa in a specific and saturable manner, and in the absence of factor V/Va promote prothrombin activation in a factor Xa concentration-dependent reaction. Activated platelets and megakaryocytes express EPR1. Both EPR1 and membrane-bound factor Va are thought to be required to mediate factor Xa binding to the activated platelet to form a functional prothrombinase complex.
Molecular Weight:	36826
UniProt:	<a href="#">Q14868</a>
Pathways:	<a href="#">Apoptosis</a> , <a href="#">Cell Division Cycle</a>

## Application Details

Application Notes:	WB: 1:1000
Restrictions:	For Research Use only

## Handling

Format:	Liquid
Buffer:	Purified polyclonal antibody supplied in PBS with 0.09 % (W/V) sodium azide.
Preservative:	Sodium azide
Precaution of Use:	This product contains Sodium azide: a POISONOUS AND HAZARDOUS SUBSTANCE which should be handled by trained staff only.
Storage:	4 °C,-20 °C
Storage Comment:	Maintain refrigerated at 2-8 °C for up to 6 months. For long term storage store at -20 °C in small aliquots to prevent freeze-thaw cycles.
Expiry Date:	6 months



#### Western Blotting

**Image 1.** The anti-EPR1 C-term Pab (ABIN390071 and ABIN2850542) is used in Western blot to detect EPR1 in HL60 cell lysate.