

Datasheet for ABIN390076
anti-CDX2 antibody (N-Term)

3 Images

[Go to Product page](#)

Overview

Quantity:	400 µL
Target:	CDX2
Binding Specificity:	AA 1-30, N-Term
Reactivity:	Human
Host:	Rabbit
Clonality:	Polyclonal
Conjugate:	This CDX2 antibody is un-conjugated
Application:	Western Blotting (WB), Immunohistochemistry (Paraffin-embedded Sections) (IHC (p))

Product Details

Immunogen:	This CDX2 antibody is generated from rabbits immunized with a KLH conjugated synthetic peptide between 1-30 amino acids from the N-terminal region of human CDX2.
Clone:	RB01821
Isotype:	Ig Fraction
Predicted Reactivity:	M
Purification:	This antibody is prepared by Saturated Ammonium Sulfate (SAS) precipitation followed by dialysis against PBS.

Target Details

Target:	CDX2
---------	------

Target Details

Alternative Name:	CDX2 (CDX2 Products)
Background:	<p>The caudal type homeo box transcription factors 1 (CDX1) and 2 (CDX2) are candidates for directing intestinal development, differentiation, and maintenance of the intestinal phenotype. CDX1 and CDX2 expression is widely present in the human intestinal and colonic mucosae, but not in the gastric mucosa, suggesting a possible role in the terminal differentiation of the intestine. Increased CDX2 expression is associated with chronic atrophic gastritis. Detectable expression of CDX2 precedes expression of CDX1 during the progression of intestinal metaplasia, thus expression of CDX2 may trigger the initiation and development of intestinal metaplasia. Markedly reduced or absent CDX2 expression was noted by immunohistochemistry in 13 of 15 (87 %) large cell minimally differentiated carcinomas (LCMDCs), whereas only 1 of the 25 (4 %) differentiated adenocarcinomas (DACs) showed reduced CDX2 expression. Thus, a significant decrease in human CDX1 and/or CDX2 expression may be associated with colorectal tumorigenesis.</p>
Molecular Weight:	33520
Gene ID:	1045
NCBI Accession:	NP_001256
UniProt:	Q99626
Pathways:	Peptide Hormone Metabolism , Stem Cell Maintenance

Application Details

Application Notes:	WB: 1:1000. WB: 1:1000. IHC-P: 1:50~100
Restrictions:	For Research Use only

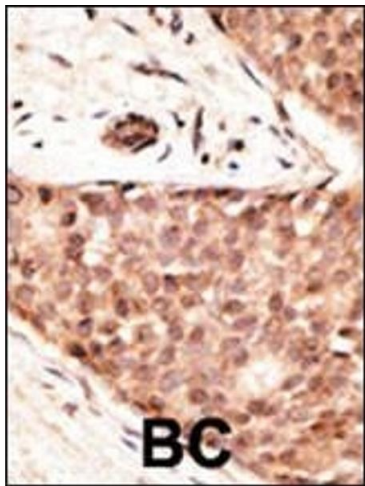
Handling

Format:	Liquid
Buffer:	Purified polyclonal antibody supplied in PBS with 0.09 % (W/V) sodium azide.
Preservative:	Sodium azide
Precaution of Use:	This product contains Sodium azide: a POISONOUS AND HAZARDOUS SUBSTANCE which should be handled by trained staff only.
Storage:	4 °C,-20 °C
Storage Comment:	Maintain refrigerated at 2-8 °C for up to 6 months. For long term storage store at -20 °C in small

aliquots to prevent freeze-thaw cycles.

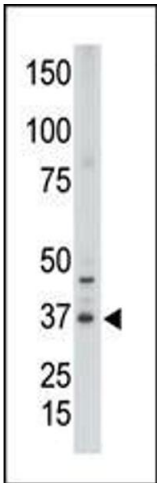
Expiry Date: 6 months

Images



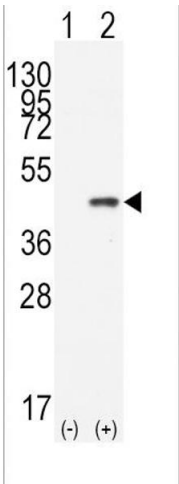
Immunohistochemistry (Paraffin-embedded Sections)

Image 1. Formalin-fixed and paraffin-embedded human cancer tissue reacted with the primary antibody, which was peroxidase-conjugated to the secondary antibody, followed by AEC staining. This data demonstrates the use of this antibody for immunohistochemistry, clinical relevance has not been evaluated. BC = breast carcinoma, HC = hepatocarcinoma.



Western Blotting

Image 2. The anti-CDX2 N-term Pab (ABIN390076 and ABIN2840597) is used in Western blot to detect CDX2 in placenta tissue lysate.



Western Blotting

Image 3. Western blot analysis of CDX2 (arrow) using rabbit polyclonal CDX2 Antibody (N-term) (ABIN390076 and ABIN2840597). 293 cell lysates (2 µg/lane) either nontransfected (Lane 1) or transiently transfected with the CDX2 gene (Lane 2) (Origene Technologies).