

Datasheet for ABIN390078

**anti-GREM1 antibody (C-Term)**

7 Images

9 Publications

[Go to Product page](#)

## Overview

Quantity:	400 µL
Target:	GREM1
Binding Specificity:	AA 147-175, C-Term
Reactivity:	Human, Mouse
Host:	Rabbit
Clonality:	Polyclonal
Conjugate:	This GREM1 antibody is un-conjugated
Application:	Western Blotting (WB)

## Product Details

Immunogen:	This GREMLIN antibody is generated from rabbits immunized with a KLH conjugated synthetic peptide between 147-175 amino acids from the C-terminal region of mouse GREMLIN.
Clone:	RB2060
Isotype:	IgG
Predicted Reactivity:	Rat
Purification:	This antibody is purified through a protein A column, followed by peptide affinity purification.

## Target Details

Target:	GREM1
Alternative Name:	GREMLIN ( <a href="#">GREM1 Products</a> )

## Target Details

Background:	GREMLIN is a member of the BMP (bone morphogenic protein) antagonist family. Like BMPs, BMP antagonists contain cystine knots and typically form homo- and heterodimers. The CAN (cerberus and dan) subfamily of BMP antagonists, to which this gene belongs, is characterized by a C-terminal cystine knot with an eight-membered ring. The antagonistic effect of the secreted glycosylated protein encoded by this gene is likely due to its direct binding to BMP proteins. As an antagonist of BMP, this gene may play a role in regulating organogenesis, body patterning, and tissue differentiation. In mouse, this protein has been shown to relay the sonic hedgehog (SHH) signal from the polarizing region to the apical ectodermal ridge during limb bud outgrowth.
Molecular Weight:	20710
Gene ID:	23892
NCBI Accession:	<a href="#">NP_035954</a>
UniProt:	<a href="#">O70326</a>
Pathways:	<a href="#">Regulation of Muscle Cell Differentiation</a> , <a href="#">Tube Formation</a> , <a href="#">Maintenance of Protein Location</a>

## Application Details

Application Notes:	WB: 1:2000
Restrictions:	For Research Use only

## Handling

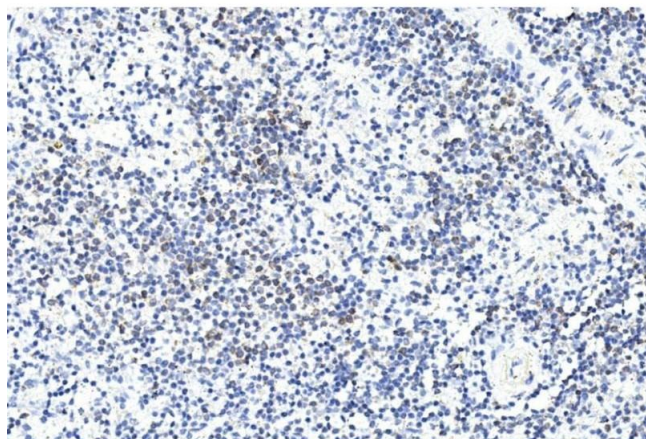
Format:	Liquid
Buffer:	Purified polyclonal antibody supplied in PBS with 0.09 % (W/V) sodium azide.
Preservative:	Sodium azide
Precaution of Use:	This product contains Sodium azide: a POISONOUS AND HAZARDOUS SUBSTANCE which should be handled by trained staff only.
Handling Advice:	Avoid freeze-thaw cycles.
Storage:	4 °C,-20 °C
Storage Comment:	Maintain refrigerated at 2-8 °C for up to 6 months. For long term storage store at -20 °C in small aliquots.
Expiry Date:	6 months

## Publications

Product cited in: Lei, Chen, Huang, Wu, Lin, Lai: "Proteomic analysis of the effect of extracellular calcium ions on human mesenchymal stem cells: Implications for bone tissue engineering." in: **Chemico-biological interactions**, Vol. 233, pp. 139-46, (2015) ([PubMed](#)).

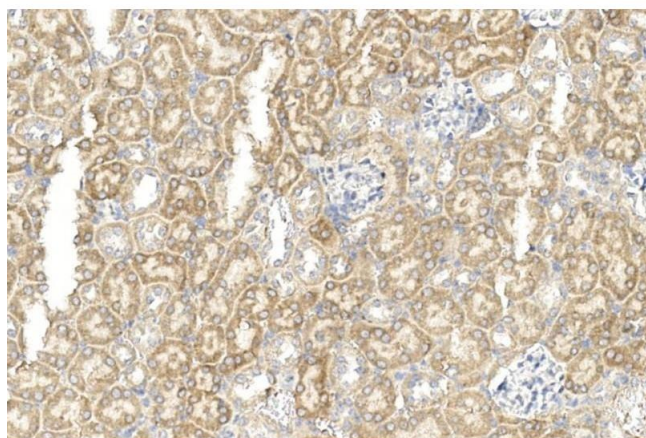
There are more publications referencing this product on: [Product page](#)

## Images



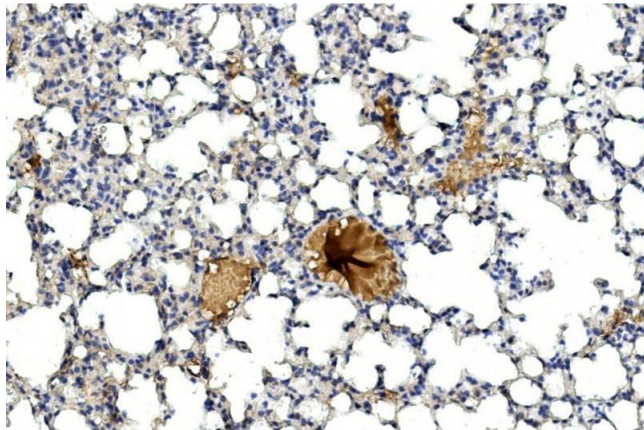
### Immunohistochemistry (Paraffin-embedded Sections)

**Image 1.** Immunohistochemical analysis of paraffin-embedded human spleen section using GREMLIN Antibody (C-term) (ABIN390078 and ABIN2840598). (ABIN390078 and ABIN2840598) was diluted at 1:200 dilution. A undiluted biotinylated goat polyvalent antibody was used as the secondary, followed by DAB staining.



### Immunohistochemistry (Paraffin-embedded Sections)

**Image 2.** Immunohistochemical analysis of paraffin-embedded mouse kidney section using GREMLIN Antibody (C-term) (ABIN390078 and ABIN2840598). (ABIN390078 and ABIN2840598) was diluted at 1:400 dilution. A undiluted biotinylated goat polyvalent antibody was used as the secondary, followed by DAB staining.



#### Immunohistochemistry (Paraffin-embedded Sections)

**Image 3.** Immunohistochemical analysis of paraffin-embedded mouse lung section using GREMLIN Antibody (C-term) (ABIN390078 and ABIN2840598). (ABIN390078 and ABIN2840598) was diluted at 1:400 dilution. A undiluted biotinylated goat polyvalent antibody was used as the secondary, followed by DAB staining.

Please check the [product details page](#) for more images. Overall 7 images are available for ABIN390078.