

Datasheet for ABIN390082

anti-S1PR1 antibody (N-Term)[Go to Product page](#)**1** Image

Overview

Quantity:	400 µL
Target:	S1PR1
Binding Specificity:	AA 10-39, N-Term
Reactivity:	Human, Mouse
Host:	Rabbit
Clonality:	Polyclonal
Conjugate:	This S1PR1 antibody is un-conjugated
Application:	Western Blotting (WB)

Product Details

Immunogen:	This EDG1 antibody is generated from rabbits immunized with a KLH conjugated synthetic peptide between 10-39 amino acids from the N-terminal region of human EDG1.
Clone:	RB02221
Isotype:	Ig Fraction
Purification:	This antibody is prepared by Saturated Ammonium Sulfate (SAS) precipitation followed by dialysis against PBS.

Target Details

Target:	S1PR1
Alternative Name:	EDG1 (S1PR1 Products)

Target Details

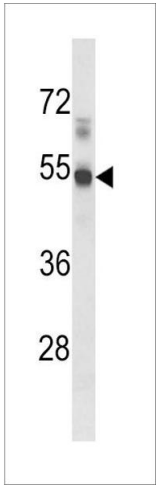
Background:	EDG1 is structurally similar to G protein-coupled receptors and is highly expressed in endothelial cells. It binds the ligand sphingosine-1-phosphate with high affinity and high specificity, and suggested to be involved in the processes that regulate the differentiation of endothelial cells. Activation of this receptor induces cell-cell adhesion.
Molecular Weight:	42811
Gene ID:	1901
NCBI Accession:	NP_001391
UniProt:	P21453
Pathways:	Signaling Events mediated by VEGFR1 and VEGFR2

Application Details

Application Notes:	WB: 1:1000
Restrictions:	For Research Use only

Handling

Format:	Liquid
Buffer:	Purified polyclonal antibody supplied in PBS with 0.09 % (W/V) sodium azide.
Preservative:	Sodium azide
Precaution of Use:	This product contains Sodium azide: a POISONOUS AND HAZARDOUS SUBSTANCE which should be handled by trained staff only.
Storage:	4 °C,-20 °C
Storage Comment:	Maintain refrigerated at 2-8 °C for up to 6 months. For long term storage store at -20 °C in small aliquots to prevent freeze-thaw cycles.
Expiry Date:	6 months



Western Blotting

Image 1. Western blot analysis of hEDG1-I25 (ABIN390082 and ABIN2840601) in mouse lung tissue lysates (35 μ g/lane). EDG1 (arrow) was detected using the purified Pab.