



Datasheet for ABIN390083

anti-BUD31 antibody (N-Term)



[Go to Product page](#)

1 Image

1 Publication

Overview

Quantity:	400 µL
Target:	BUD31
Binding Specificity:	AA 21-50, N-Term
Reactivity:	Human
Host:	Rabbit
Clonality:	Polyclonal
Conjugate:	This BUD31 antibody is un-conjugated
Application:	Western Blotting (WB)

Product Details

Immunogen:	This EDG2 antibody is generated from rabbits immunized with a KLH conjugated synthetic peptide between 21-50 amino acids from the N-terminal region of human EDG2.
Clone:	RB01825
Isotype:	Ig Fraction
Purification:	This antibody is prepared by Saturated Ammonium Sulfate (SAS) precipitation followed by dialysis against PBS.

Target Details

Target:	BUD31
Alternative Name:	EDG2 (BUD31 Products)

Target Details

Background:	The EDG2 integral membrane protein is a lysophosphatidic acid (LPA) receptor from a group known as EDG receptors. These receptors are members of the G protein-coupled receptor superfamily. Utilized by LPA for cell signaling, EDG receptors mediate diverse biologic functions, including proliferation, platelet aggregation, smooth muscle contraction, inhibition of neuroblastoma cell differentiation, chemotaxis, and tumor cell invasion.
Molecular Weight:	41109
Gene ID:	1902
NCBI Accession:	NP_001392 , NP_476500
UniProt:	Q92633

Application Details

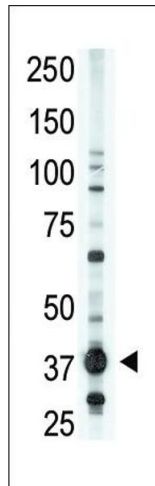
Application Notes:	WB: 1:1000
Restrictions:	For Research Use only

Handling

Format:	Liquid
Buffer:	Purified polyclonal antibody supplied in PBS with 0.09 % (W/V) sodium azide.
Preservative:	Sodium azide
Precaution of Use:	This product contains Sodium azide: a POISONOUS AND HAZARDOUS SUBSTANCE which should be handled by trained staff only.
Storage:	4 °C,-20 °C
Storage Comment:	Maintain refrigerated at 2-8 °C for up to 6 months. For long term storage store at -20 °C in small aliquots to prevent freeze-thaw cycles.
Expiry Date:	6 months

Publications

Product cited in:	Bolomini-Vittori, Montresor, Giagulli, Staunton, Rossi, Martinello, Constantin, Laudanna: "Regulation of conformer-specific activation of the integrin LFA-1 by a chemokine-triggered Rho signaling module." in: Nature immunology , Vol. 10, Issue 2, pp. 185-94, (2009) (PubMed).
-------------------	--



Western Blotting

Image 1. The anti-EDG2 N-term Antibody (ABIN390083 and ABIN2840602) is used in Western blot to detect EDG2 in lysate.