

Datasheet for ABIN390090
anti-JAG2 antibody (C-Term)[Go to Product page](#)

2 Images

1 Publication

Overview

Quantity:	400 µL
Target:	JAG2
Binding Specificity:	AA 1209-1238, C-Term
Reactivity:	Human
Host:	Rabbit
Clonality:	Polyclonal
Conjugate:	This JAG2 antibody is un-conjugated
Application:	Western Blotting (WB), Immunohistochemistry (Paraffin-embedded Sections) (IHC (p))

Product Details

Immunogen:	This Jagged 2 (JAG2) antibody is generated from rabbits immunized with a KLH conjugated synthetic peptide between 1209-1238 amino acids from the C-terminal region of human Jagged 2 (JAG2).
Clone:	RB1913-1914
Isotype:	Ig Fraction
Purification:	This antibody is prepared by Saturated Ammonium Sulfate (SAS) precipitation followed by dialysis against PBS.

Target Details

Target:	JAG2
---------	------

Abstract: [JAG2 Products](#)

Target Details

Background:	The Notch signaling pathway is an intercellular signaling mechanism that is essential for proper embryonic development. Members of the Notch gene family encode transmembrane receptors that are critical for various cell fate decisions. JAG2 is one of several ligands that activate Notch and related receptors.
Molecular Weight:	133367
Gene ID:	3714
NCBI Accession:	NP_002217 , NP_660142
UniProt:	Q9Y219
Pathways:	Notch Signaling , Sensory Perception of Sound

Application Details

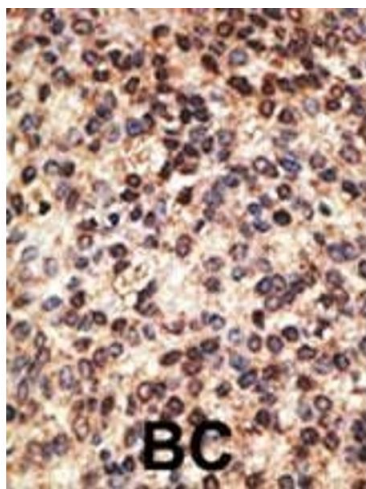
Application Notes:	WB: 1:1000. IHC-P: 1:50~100
Restrictions:	For Research Use only

Handling

Format:	Liquid
Buffer:	Purified polyclonal antibody supplied in PBS with 0.09 % (W/V) sodium azide.
Preservative:	Sodium azide
Precaution of Use:	This product contains Sodium azide: a POISONOUS AND HAZARDOUS SUBSTANCE which should be handled by trained staff only.
Storage:	4 °C,-20 °C
Storage Comment:	Maintain refrigerated at 2-8 °C for up to 6 months. For long term storage store at -20 °C in small aliquots to prevent freeze-thaw cycles.
Expiry Date:	6 months

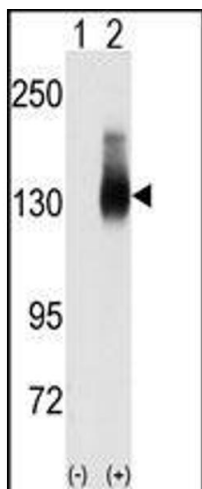
Publications

Product cited in:	Bolomini-Vittori, Montresor, Giagulli, Staunton, Rossi, Martinello, Constantin, Laudanna: "Regulation of conformer-specific activation of the integrin LFA-1 by a chemokine-triggered Rho signaling module." in: Nature immunology , Vol. 10, Issue 2, pp. 185-94, (2009) (PubMed).
-------------------	--



Immunohistochemistry (Paraffin-embedded Sections)

Image 1. Formalin-fixed and paraffin-embedded human cancer tissue reacted with the primary antibody, which was peroxidase-conjugated to the secondary antibody, followed by DAB staining. This data demonstrates the use of this antibody for immunohistochemistry, clinical relevance has not been evaluated. BC = breast carcinoma, HC = hepatocarcinoma.



Western Blotting

Image 2. Western blot analysis of Jag2 (arrow) using JAG2 Antibody (C-term) (ABIN390090 and ABIN2840607). 293 cell lysates (2 µg/lane) either nontransfected (Lane 1) or transiently transfected with the JAG2 gene (Lane 2) (Origene Technologies).