

Datasheet for ABIN390092  
**anti-Leptin antibody (C-Term)**



[Go to Product page](#)

2 Images

## Overview

Quantity:	400 µL
Target:	Leptin (LEP)
Binding Specificity:	AA 134-166, C-Term
Reactivity:	Human
Host:	Rabbit
Clonality:	Polyclonal
Conjugate:	This Leptin antibody is un-conjugated
Application:	Western Blotting (WB), Immunofluorescence (IF)

## Product Details

Immunogen:	This Leptin (LEP) antibody is generated from rabbits immunized with a KLH conjugated synthetic peptide between 134-166 amino acids from the C-terminal region of human Leptin (LEP).
Clone:	RB2051
Isotype:	Ig Fraction
Purification:	This antibody is prepared by Saturated Ammonium Sulfate (SAS) precipitation followed by dialysis against PBS.

## Target Details

Target:	Leptin (LEP)
Abstract:	<a href="#">LEP Products</a>

## Target Details

---

Background:	Leptin (LEP) is an adipocyte-secreted protein that regulates body fat and endocrine functions. Leptin is similar to the mouse obesity protein encoded by the obese gene (ob). In mouse studies, mutations in this gene are linked to severe and morbid obesity.
Molecular Weight:	18641
Gene ID:	3952
NCBI Accession:	<a href="#">NP_000221</a>
UniProt:	<a href="#">P41159</a>
Pathways:	<a href="#">JAK-STAT Signaling</a> , <a href="#">AMPK Signaling</a> , <a href="#">Hormone Transport</a> , <a href="#">Peptide Hormone Metabolism</a> , <a href="#">Hormone Activity</a> , <a href="#">Negative Regulation of Hormone Secretion</a> , <a href="#">Regulation of Carbohydrate Metabolic Process</a> , <a href="#">Feeding Behaviour</a> , <a href="#">Monocarboxylic Acid Catabolic Process</a>

## Application Details

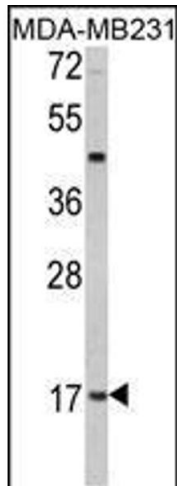
---

Application Notes:	IF: 1:10~50. WB: 1:1000
Restrictions:	For Research Use only

## Handling

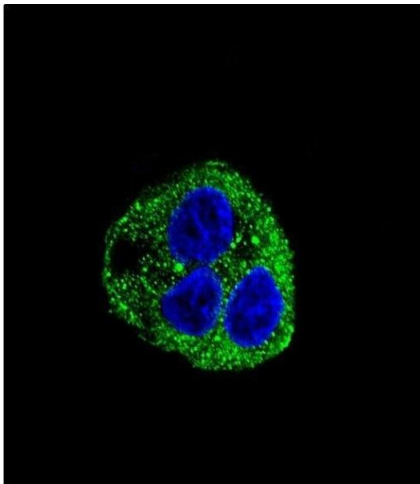
---

Format:	Liquid
Buffer:	Purified polyclonal antibody supplied in PBS with 0.09 % (W/V) sodium azide.
Preservative:	Sodium azide
Precaution of Use:	This product contains Sodium azide: a POISONOUS AND HAZARDOUS SUBSTANCE which should be handled by trained staff only.
Storage:	4 °C, -20 °C
Storage Comment:	Maintain refrigerated at 2-8 °C for up to 6 months. For long term storage store at -20 °C in small aliquots to prevent freeze-thaw cycles.
Expiry Date:	6 months



### Western Blotting

**Image 1.** Western blot analysis of hLep- (ABIN390092 and ABIN2840608) in MDA-M cell line lysates (35 µg/lane). LEP (arrow) was detected using the purified Pab.



### Immunofluorescence

**Image 2.** Confocal immunofluorescent analysis of Leptin (LEP) Antibody (C-term) (ABIN390092 and ABIN2840608) with HepG2 cells followed by Alexa Fluor® 488-conjugated goat anti-rabbit IgG (green). DAPI was used to stain the cell nuclei (blue).