

Datasheet for ABIN390093

anti-Leptin Receptor antibody (N-Term)

3 Images

[Go to Product page](#)

Overview

Quantity:	400 µL
Target:	Leptin Receptor (LEPR)
Binding Specificity:	AA 23-52, N-Term
Reactivity:	Human
Host:	Rabbit
Clonality:	Polyclonal
Conjugate:	This Leptin Receptor antibody is un-conjugated
Application:	Western Blotting (WB), Flow Cytometry (FACS), Immunohistochemistry (Paraffin-embedded Sections) (IHC (p))

Product Details

Immunogen:	This Leptin Receptor (LEPR) antibody is generated from rabbits immunized with a KLH conjugated synthetic peptide between 23-52 amino acids from the N-terminal region of human Leptin Receptor (LEPR).
Clone:	RB02053
Isotype:	Ig Fraction
Purification:	This antibody is prepared by Saturated Ammonium Sulfate (SAS) precipitation followed by dialysis against PBS.

Target Details

Target:	Leptin Receptor (LEPR)
---------	------------------------

Target Details

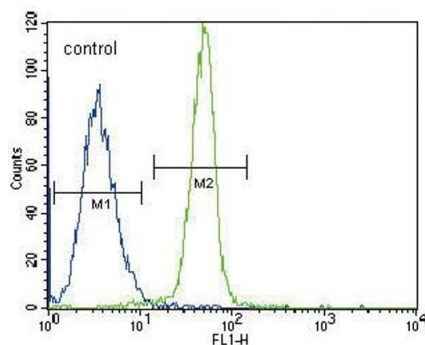
Abstract:	LEPR Products
Background:	Leptin, an adipocyte-specific hormone, regulates adipose-tissue mass through hypothalamic effects on satiety and energy expenditure by acting through the leptin receptor (LEPR). LEPR is a single-transmembrane-domain receptor of the cytokine receptor family that is identical to the mouse diabetes (db) gene product. During weight loss, leptin levels decrease, whereas soluble LEPR levels and the receptor bound fraction of leptin increases. The presence of LEPR in the absorptive cells of the small intestine suggests that leptin may have a physiological role in the regulation of nutrient absorption.
Molecular Weight:	132494
Gene ID:	3953
NCBI Accession:	NP_001003679 , NP_001003680 , NP_001185616 , NP_001185617 , NP_001185618 , NP_002294
UniProt:	P48357
Pathways:	JAK-STAT Signaling , AMPK Signaling , Feeding Behaviour

Application Details

Application Notes:	WB: 1:1000. IHC-P: 1:50~100. FC: 1:10~50
Restrictions:	For Research Use only

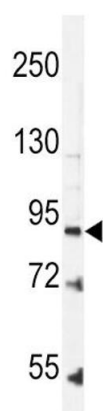
Handling

Format:	Liquid
Buffer:	Purified polyclonal antibody supplied in PBS with 0.09 % (W/V) sodium azide.
Preservative:	Sodium azide
Precaution of Use:	This product contains Sodium azide: a POISONOUS AND HAZARDOUS SUBSTANCE which should be handled by trained staff only.
Storage:	4 °C, -20 °C
Storage Comment:	Maintain refrigerated at 2-8 °C for up to 6 months. For long term storage store at -20 °C in small aliquots to prevent freeze-thaw cycles.
Expiry Date:	6 months



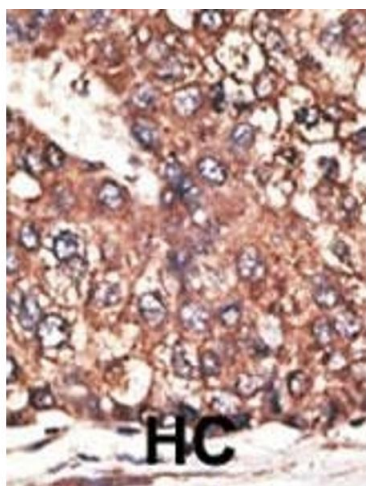
Flow Cytometry

Image 1. Leptin Receptor (LEPR) Antibody (N-term) (ABIN390093 and ABIN2840609) flow cytometric analysis of K562 cells (right histogram) compared to a negative control cell (left histogram). FITC-conjugated goat-anti-rabbit secondary antibodies were used for the analysis.



Western Blotting

Image 2. Leptin Receptor (LEPR) Antibody (N-term) (ABIN390093 and ABIN2840609) western blot analysis in K562 cell line lysates (35 µg/lane). This demonstrates the LEPR antibody detected the LEPR protein (arrow).



Immunohistochemistry (Paraffin-embedded Sections)

Image 3. Formalin-fixed and paraffin-embedded human cancer tissue reacted with the primary antibody, which was peroxidase-conjugated to the secondary antibody, followed by DAB staining. This data demonstrates the use of this antibody for immunohistochemistry, clinical relevance has not been evaluated. BC = breast carcinoma, HC = hepatocarcinoma.