

Datasheet for ABIN390100  
**anti-LRP6 antibody (C-Term)**[Go to Product page](#)[2 Images](#)[3 Publications](#)

## Overview

Quantity:	400 µL
Target:	LRP6
Binding Specificity:	AA 1531-1560, C-Term
Reactivity:	Human
Host:	Rabbit
Clonality:	Polyclonal
Conjugate:	This LRP6 antibody is un-conjugated
Application:	Western Blotting (WB), Immunohistochemistry (Paraffin-embedded Sections) (IHC (p))

## Product Details

Immunogen:	This LRP6 antibody is generated from rabbits immunized with a KLH conjugated synthetic peptide between 1531-1560 amino acids from the C-terminal region of human LRP6.
Clone:	RB01837
Isotype:	Ig Fraction
Purification:	This antibody is prepared by Saturated Ammonium Sulfate (SAS) precipitation followed by dialysis against PBS.

## Target Details

Target:	LRP6
Alternative Name:	LRP6 ( <a href="#">LRP6 Products</a> )

## Target Details

Background:	LRP6 is essential for the Wnt/beta catenin signaling pathway, probably by acting as a coreceptor together with Frizzled for Wnt. It is a specific, high-affinity receptor for DKK1 and DKK2, but not DKK3. The interaction with DKK1 blocks LRP6-mediated Wnt/beta catenin signaling via LRP6 removal via Kremen proteins-mediated endocytosis.
Molecular Weight:	180429
Gene ID:	4040
NCBI Accession:	<a href="#">NP_002327</a>
UniProt:	<a href="#">O75581</a>
Pathways:	<a href="#">WNT Signaling</a> , <a href="#">Tube Formation</a>

## Application Details

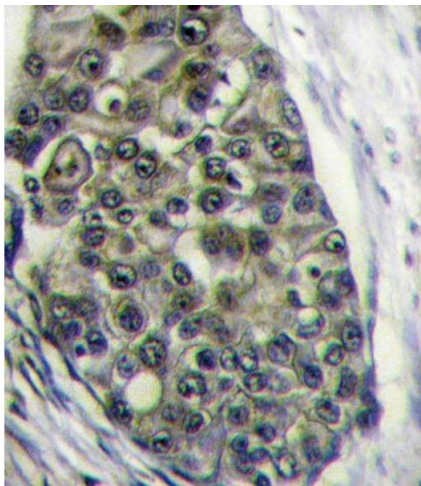
Application Notes:	WB: 1:1000. IHC-P: 1:10~50
Restrictions:	For Research Use only

## Handling

Format:	Liquid
Buffer:	Purified polyclonal antibody supplied in PBS with 0.09 % (W/V) sodium azide.
Preservative:	Sodium azide
Precaution of Use:	This product contains Sodium azide: a POISONOUS AND HAZARDOUS SUBSTANCE which should be handled by trained staff only.
Storage:	4 °C,-20 °C
Storage Comment:	Maintain refrigerated at 2-8 °C for up to 6 months. For long term storage store at -20 °C in small aliquots to prevent freeze-thaw cycles.
Expiry Date:	6 months

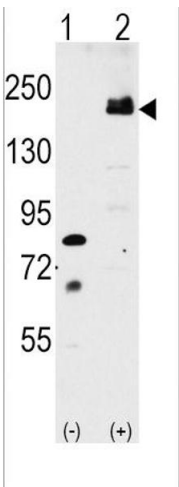
## Publications

Product cited in:	Bolomini-Vittori, Montresor, Giagulli, Staunton, Rossi, Martinello, Constantin, Laudanna: "Regulation of conformer-specific activation of the integrin LFA-1 by a chemokine-triggered Rho signaling module." in: <b>Nature immunology</b> , Vol. 10, Issue 2, pp. 185-94, (2009) ( <a href="#">PubMed</a> ).
-------------------	--



Immunohistochemistry (Paraffin-embedded Sections)

**Image 1.** Formalin-fixed and paraffin-embedded human breast carcinoma tissue reacted with LRP6 Antibody (C-term ) (ABIN390100 and ABIN2840612) , which was peroxidase-conjugated to the secondary antibody, followed by DAB staining. This data demonstrates the use of this antibody for immunohistochemistry, clinical relevance has not been evaluated.



Western Blotting

**Image 2.** Western blot analysis of LRP6 (arrow) using rabbit polyclonal LRP6 Antibody (C-term ) (ABIN390100 and ABIN2840612). 293 cell lysates (2 µg/lane) either nontransfected (Lane 1) or transiently transfected with the LRP6 gene (Lane 2) (Origene Technologies).