

Datasheet for ABIN390101
anti-LRP8 antibody (C-Term)[Go to Product page](#)

2 Images

Overview

Quantity:	400 µL
Target:	LRP8
Binding Specificity:	AA 934-963, C-Term
Reactivity:	Human
Host:	Rabbit
Clonality:	Polyclonal
Conjugate:	This LRP8 antibody is un-conjugated
Application:	Western Blotting (WB), Immunohistochemistry (Paraffin-embedded Sections) (IHC (p))

Product Details

Immunogen:	This APOER2 (LRP8) antibody is generated from rabbits immunized with a KLH conjugated synthetic peptide between 934-963 amino acids from the C-terminal region of human APOER2 (LRP8).
Clone:	RB1839-1840
Isotype:	Ig Fraction
Purification:	This antibody is prepared by Saturated Ammonium Sulfate (SAS) precipitation followed by dialysis against PBS.

Target Details

Target:	LRP8
Alternative Name:	APOER2 (LRP8) (LRP8 Products)

Target Details

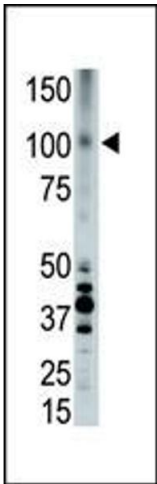
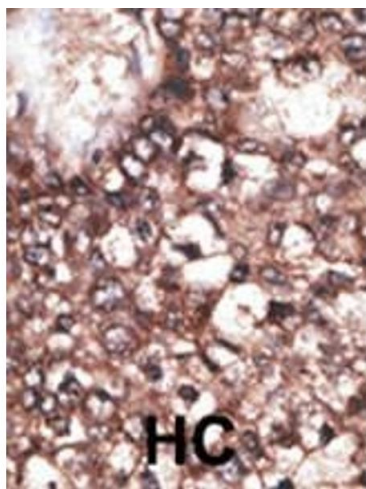
Background:	LPR8 is an apolipoprotein E receptor, a member of the low density lipoprotein receptor (LDLR) family. Apolipoprotein E is a small lipophilic plasma protein and a component of lipoproteins such as chylomicron remnants, very low density lipoprotein (VLDL), and high density lipoprotein (HDL). The apolipoprotein E receptor is involved in cellular recognition and internalization of these lipoproteins.
Molecular Weight:	105634
Gene ID:	7804
NCBI Accession:	NP_001018064 , NP_004622 , NP_059992 , NP_150643
UniProt:	Q14114

Application Details

Application Notes:	WB: 1:1000. IHC-P: 1:50~100
Restrictions:	For Research Use only

Handling

Format:	Liquid
Buffer:	Purified polyclonal antibody supplied in PBS with 0.09 % (W/V) sodium azide.
Preservative:	Sodium azide
Precaution of Use:	This product contains Sodium azide: a POISONOUS AND HAZARDOUS SUBSTANCE which should be handled by trained staff only.
Storage:	4 °C,-20 °C
Storage Comment:	Maintain refrigerated at 2-8 °C for up to 6 months. For long term storage store at -20 °C in small aliquots to prevent freeze-thaw cycles.
Expiry Date:	6 months



Immunohistochemistry (Paraffin-embedded Sections)

Image 1. Formalin-fixed and paraffin-embedded human cancer tissue reacted with the primary antibody, which was peroxidase-conjugated to the secondary antibody, followed by DAB staining. This data demonstrates the use of this antibody for immunohistochemistry, clinical relevance has not been evaluated. BC = breast carcinoma, HC = hepatocarcinoma.

Western Blotting

Image 2. The anti-LRP8 Pab (ABIN390101 and ABIN2840613) is used in Western blot to detect LRP8 in placenta cell lysate.