

Datasheet for ABIN390108

anti-MAGEA4 antibody (N-Term)**3** Images**1** Publication[Go to Product page](#)

Overview

Quantity:	400 µL
Target:	MAGEA4
Binding Specificity:	AA 9-38, N-Term
Reactivity:	Human
Host:	Rabbit
Clonality:	Polyclonal
Conjugate:	This MAGEA4 antibody is un-conjugated
Application:	Western Blotting (WB), Immunohistochemistry (Paraffin-embedded Sections) (IHC (p))

Product Details

Immunogen:	This MAGEA4 antibody is generated from rabbits immunized with a KLH conjugated synthetic peptide between 9-38 amino acids from the N-terminal region of human MAGEA4.
Clone:	RB2196
Isotype:	Ig Fraction
Purification:	This antibody is prepared by Saturated Ammonium Sulfate (SAS) precipitation followed by dialysis against PBS.

Target Details

Target:	MAGEA4
Alternative Name:	MAGEA4 (MAGEA4 Products)

Target Details

Background:	MAGEA4 is a member of the MAGEA gene family. The members of this family encode proteins with 50 to 80 % sequence identity to each other. The promoters and first exons of the MAGEA genes show considerable variability, suggesting that the existence of this gene family enables the same function to be expressed under different transcriptional controls. The MAGEA genes are clustered at chromosomal location Xq28. They have been implicated in some hereditary disorders, such as dyskeratosis congenita.
Gene ID:	4103
NCBI Accession:	NP_001011548 , NP_001011549 , NP_001011550 , NP_002353
UniProt:	P43358

Application Details

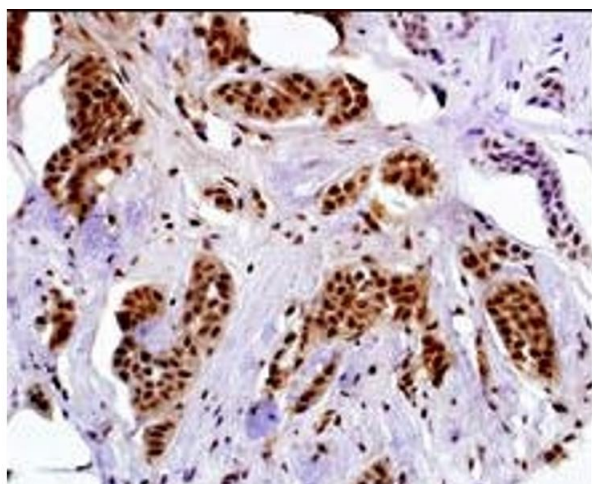
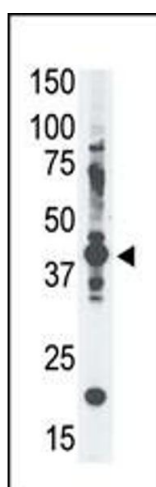
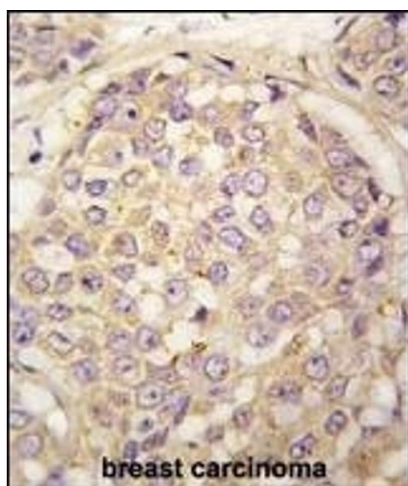
Application Notes:	WB: 1:1000. IHC-P: 1:50~100. IHC-P: 1:50~100
Restrictions:	For Research Use only

Handling

Format:	Liquid
Buffer:	Purified polyclonal antibody supplied in PBS with 0.09 % (W/V) sodium azide.
Preservative:	Sodium azide
Precaution of Use:	This product contains Sodium azide: a POISONOUS AND HAZARDOUS SUBSTANCE which should be handled by trained staff only.
Storage:	4 °C,-20 °C
Storage Comment:	Maintain refrigerated at 2-8 °C for up to 6 months. For long term storage store at -20 °C in small aliquots to prevent freeze-thaw cycles.
Expiry Date:	6 months

Publications

Product cited in:	Yang, Xu, Lu, Li, Sun, Guo, Xue, Guan: "Quantitative Analysis of Differential Proteome Expression in Bladder Cancer vs. Normal Bladder Cells Using SILAC Method." in: PLoS ONE , Vol. 10, Issue 7, pp. e0134727, (2015) (PubMed).
-------------------	--



Immunohistochemistry (Paraffin-embedded Sections)

Image 1. Forlin-fixed and paraffin-embedded hun breast carcino tissue reacted with GEA4 antibody (N-term) (ABIN390108 and ABIN2840620) , which was peroxidase-conjugated to the secondary antibody, followed by DAB staining. This data demonstrates the use of this antibody for immunohistochemistry, clinical relevance has not been evaluated.

Western Blotting

Image 2. The anti-GE-A4 Pab (ABIN390108 and ABIN2840620) is used in Western blot to detect GE-A4 in cell lysate.

Immunohistochemistry (Paraffin-embedded Sections)

Image 3. Immunostaining of paraformldehyde-fixed and paraffin-embedded hun breast carcino with GE-A4 antibody Cat (ABIN390108 and ABIN2840620) (1:50 dilution), followed by reacting with biotin-conjugated secondary antibody, ABC solution and developing with DAB. Cancerous cells show nuclear staining of GE-A4. gnification: 40X. Data courtesy of Dr. Mi Hou, Karolinska?Institutet and University Hospital, Sweden.