

Datasheet for ABIN390116
anti-MAGEC1 antibody (C-Term)[Go to Product page](#)

2 Images

Overview

Quantity:	400 µL
Target:	MAGEC1
Binding Specificity:	AA 849-880, C-Term
Reactivity:	Human
Host:	Rabbit
Clonality:	Polyclonal
Conjugate:	This MAGEC1 antibody is un-conjugated
Application:	Western Blotting (WB), Immunohistochemistry (Paraffin-embedded Sections) (IHC (p))

Product Details

Immunogen:	This MAGEC1 antibody is generated from rabbits immunized with a KLH conjugated synthetic peptide between 849-880 amino acids from the C-terminal region of human MAGEC1.
Clone:	RB2133-2134
Isotype:	Ig Fraction
Purification:	This antibody is prepared by Saturated Ammonium Sulfate (SAS) precipitation followed by dialysis against PBS.

Target Details

Target:	MAGEC1
Alternative Name:	MAGEC1 (MAGEC1 Products)

Target Details

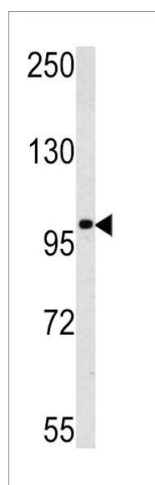
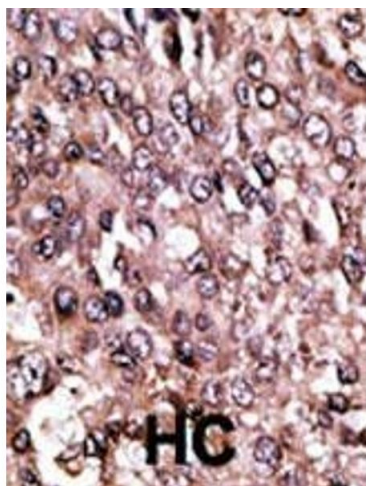
Background:	MAGEC1 is a member of the melanoma antigen gene (MAGE) family. The proteins of this family are tumor-specific antigens that can be recognized by autologous cytolytic T lymphocytes. This protein contains a large number of unique short repetitive sequences in front of the MAGE-homologous sequence, thus is about 800 residues longer than the other MAGE proteins. This gene is expressed in a significant proportion of tumors of various histological types, whereas it is silent in normal tissues, except testis. The function of this gene is unknown.
Gene ID:	9947
NCBI Accession:	NP_005453
UniProt:	O60732

Application Details

Application Notes:	WB: 1:1000. IHC-P: 1:50~100
Restrictions:	For Research Use only

Handling

Format:	Liquid
Buffer:	Purified polyclonal antibody supplied in PBS with 0.09 % (W/V) sodium azide.
Preservative:	Sodium azide
Precaution of Use:	This product contains Sodium azide: a POISONOUS AND HAZARDOUS SUBSTANCE which should be handled by trained staff only.
Storage:	4 °C,-20 °C
Storage Comment:	Maintain refrigerated at 2-8 °C for up to 6 months. For long term storage store at -20 °C in small aliquots to prevent freeze-thaw cycles.
Expiry Date:	6 months



Immunohistochemistry (Paraffin-embedded Sections)

Image 1. Formalin-fixed and paraffin-embedded human cancer tissue reacted with the primary antibody, which was peroxidase-conjugated to the secondary antibody, followed by AEC staining. This data demonstrates the use of this antibody for immunohistochemistry, clinical relevance has not been evaluated. BC = breast carcinoma, HC = hepatocarcinoma.

Western Blotting

Image 2. Western blot analysis of GEC1 antibody (C-term) (ABIN390116 and ABIN2840624) in K562 cell line lysates (35 µg/lane). GEC1 (arrow) was detected using the purified Pab.