

Datasheet for ABIN390117  
**anti-MAGED1 antibody (AA 426-456)**[Go to Product page](#)

## 2 Images

## Overview

|                      |  |
|----------------------|--|
| Quantity:            | 400 µL   |
| Target:              | MAGED1   |
| Binding Specificity: | AA 426-456   |
| Reactivity:          | Human  |
| Host:                | Rabbit   |
| Clonality:           | Polyclonal   |
| Conjugate:           | This MAGED1 antibody is un-conjugated  |
| Application:         | Western Blotting (WB), Immunohistochemistry (Paraffin-embedded Sections) (IHC (p)) |

## Product Details

|                       |   |
|-----------------------|---|
| Immunogen:            | This MAGED1 antibody is generated from rabbits immunized with a KLH conjugated synthetic peptide between 426-456 amino acids from the Central region of human MAGED1. |
| Clone:                | RB2135  |
| Isotype:              | Ig Fraction   |
| Predicted Reactivity: | Pig   |
| Purification:         | This antibody is prepared by Saturated Ammonium Sulfate (SAS) precipitation followed by dialysis against PBS.   |

## Target Details

|         |        |
|---------|--------|
| Target: | MAGED1 |
|---------|--------|

## Target Details

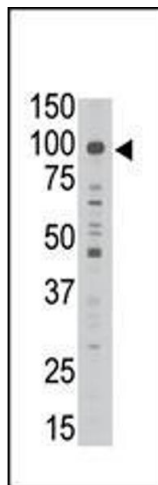
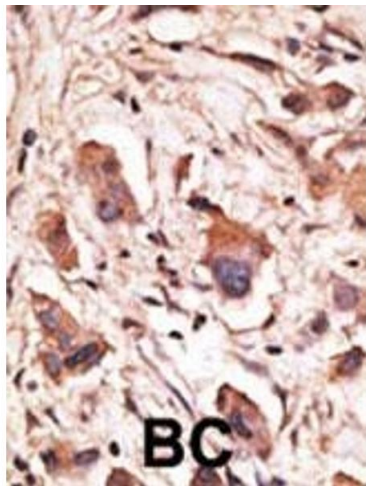
|                   |  |
|-------------------|--|
| Alternative Name: | MAGED1 ( <a href="#">MAGED1 Products</a> )   |
| Background:       | MAGED1 is a member of the melanoma antigen gene (MAGE) family. Most of the genes of this family encode tumor specific antigens that are not expressed in normal adult tissues except testis. Although the protein encoded by this gene shares strong homology with members of the MAGE family, it is expressed in almost all normal adult tissues. This gene has been demonstrated to be involved in the p75 neurotrophin receptor mediated programmed cell death pathway. |
| Molecular Weight: | 86161  |
| Gene ID:          | 9500   |
| NCBI Accession:   | <a href="#">NP_001005332</a> , <a href="#">NP_001005333</a> , <a href="#">NP_008917</a>  |
| UniProt:          | <a href="#">Q9Y5V3</a>   |
| Pathways:         | <a href="#">Neurotrophin Signaling Pathway</a>   |

## Application Details

|                    |                             |
|--------------------|-----------------------------|
| Application Notes: | WB: 1:1000. IHC-P: 1:50~100 |
| Restrictions:      | For Research Use only       |

## Handling

|                    |  |
|--------------------|--|
| Format:            | Liquid   |
| Buffer:            | Purified polyclonal antibody supplied in PBS with 0.09 % (W/V) sodium azide.   |
| Preservative:      | Sodium azide   |
| Precaution of Use: | This product contains Sodium azide: a POISONOUS AND HAZARDOUS SUBSTANCE which should be handled by trained staff only.                     |
| Storage:           | 4 °C,-20 °C  |
| Storage Comment:   | Maintain refrigerated at 2-8 °C for up to 6 months. For long term storage store at -20 °C in small aliquots to prevent freeze-thaw cycles. |
| Expiry Date:       | 6 months   |



### Immunohistochemistry (Paraffin-embedded Sections)

**Image 1.** Formalin-fixed and paraffin-embedded human cancer tissue reacted with the primary antibody, which was peroxidase-conjugated to the secondary antibody, followed by DAB staining. This data demonstrates the use of this antibody for immunohistochemistry, clinical relevance has not been evaluated. BC = breast carcinoma, HC = hepatocarcinoma.

### Western Blotting

**Image 2.** The anti-GED1 Ctr Antibody (ABIN390117 and ABIN2840625) is used in Western blot to detect GED1 in A549 lysate.