



[Go to Product page](#)

Datasheet for ABIN390118  
**anti-MAGED2 antibody (C-Term)**

2 Images

Overview

Quantity:	400 µL
Target:	MAGED2
Binding Specificity:	AA 576-606, C-Term
Reactivity:	Human
Host:	Rabbit
Clonality:	Polyclonal
Conjugate:	This MAGED2 antibody is un-conjugated
Application:	Western Blotting (WB), Immunohistochemistry (Paraffin-embedded Sections) (IHC (p))

Product Details

Immunogen:	This MAGED2 antibody is generated from rabbits immunized with a KLH conjugated synthetic peptide between 576-606 amino acids from the C-terminal region of human MAGED2.
Clone:	RB2127
Isotype:	Ig Fraction
Purification:	This antibody is prepared by Saturated Ammonium Sulfate (SAS) precipitation followed by dialysis against PBS.

Target Details

Target:	MAGED2
Alternative Name:	MAGED2 ( <a href="#">MAGED2 Products</a> )

## Target Details

---

**Background:** MAGED2 is a member of the MAGED gene family. In contrast to the MAGEA and MAGEB genes, which have their entire coding sequences located in the last exon, the MAGED genes have their coding sequences located throughout multiple exons. Also, the MAGEA and MAGEB genes are silent in normal tissues with the exception of testis and placenta, whereas the MAGED genes are expressed ubiquitously. The MAGED genes are clustered on chromosome Xp11. This gene is located in Xp11.2, a hot spot for X-linked mental retardation (XLMR).

**Molecular Weight:** 64954

**Gene ID:** 10916

**NCBI Accession:** [NP\\_055414](#), [NP\\_803182](#), [NP\\_957516](#)

**UniProt:** [Q9UNF1](#)

## Application Details

---

**Application Notes:** WB: 1:1000. IHC-P: 1:50~100

**Restrictions:** For Research Use only

## Handling

---

**Format:** Liquid

**Buffer:** Purified polyclonal antibody supplied in PBS with 0.09 % (W/V) sodium azide.

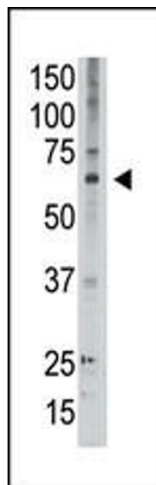
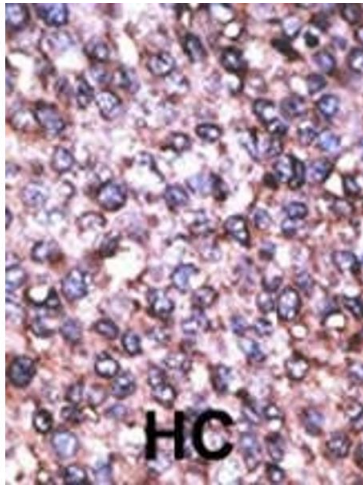
**Preservative:** Sodium azide

**Precaution of Use:** This product contains Sodium azide: a POISONOUS AND HAZARDOUS SUBSTANCE which should be handled by trained staff only.

**Storage:** 4 °C, -20 °C

**Storage Comment:** Maintain refrigerated at 2-8 °C for up to 6 months. For long term storage store at -20 °C in small aliquots to prevent freeze-thaw cycles.

**Expiry Date:** 6 months



### Immunohistochemistry (Paraffin-embedded Sections)

**Image 1.** Formalin-fixed and paraffin-embedded human cancer tissue reacted with the primary antibody, which was peroxidase-conjugated to the secondary antibody, followed by AEC staining. This data demonstrates the use of this antibody for immunohistochemistry, clinical relevance has not been evaluated. BC = breast carcinoma, HC = hepatocarcinoma.

### Western Blotting

**Image 2.** The anti-GED2 C-term Antibody (ABIN390118 and ABIN2840626) is used in Western blot to detect GED2 in A549 lysate.