

Datasheet for ABIN390122

**anti-MAGE-Like 2 antibody (C-Term)****2** Images[Go to Product page](#)

## Overview

Quantity:	400 µL
Target:	MAGE-Like 2 (MAGEL2)
Binding Specificity:	AA 499-529, C-Term
Reactivity:	Human
Host:	Rabbit
Clonality:	Polyclonal
Conjugate:	This MAGE-Like 2 antibody is un-conjugated
Application:	Western Blotting (WB), Immunohistochemistry (Paraffin-embedded Sections) (IHC (p))

## Product Details

Immunogen:	This MAGEL2 antibody is generated from rabbits immunized with a KLH conjugated synthetic peptide between 499-529 amino acids from the C-terminal region of human MAGEL2.
Clone:	RB2131
Isotype:	Ig Fraction
Purification:	This antibody is purified through a protein A column, followed by peptide affinity purification.

## Target Details

Target:	MAGE-Like 2 (MAGEL2)
Alternative Name:	MAGEL2 ( <a href="#">MAGEL2 Products</a> )
Background:	Melanoma-associated antigen (MAGE) are completely silent in normal tissues, with the

## Target Details

exception of male germ cells, and, for some of them, placenta. These antigens ought to be strictly tumor specific, expressed in tumor cells of various histological types. Because of their specific expression on tumor cells, these antigens are of particular interest for antitumor immunotherapy. Genes of the MAGE family direct the expression of tumor antigens that are recognized on a human melanoma by autologous cytolytic T lymphocytes. Though the function of MAGE is unknown, may play a role in embryonal development and tumor transformation or aspects of tumor progression.

Molecular Weight:	132822
-------------------	--------

Gene ID:	54551
----------	-------

UniProt:	<a href="#">Q9UJ55</a>
----------	------------------------

## Application Details

Application Notes:	WB: 1:1000. IHC-P: 1:10~50
--------------------	----------------------------

Restrictions:	For Research Use only
---------------	-----------------------

## Handling

Format:	Liquid
---------	--------

Buffer:	Purified polyclonal antibody supplied in PBS with 0.09 % (W/V) sodium azide.
---------	--

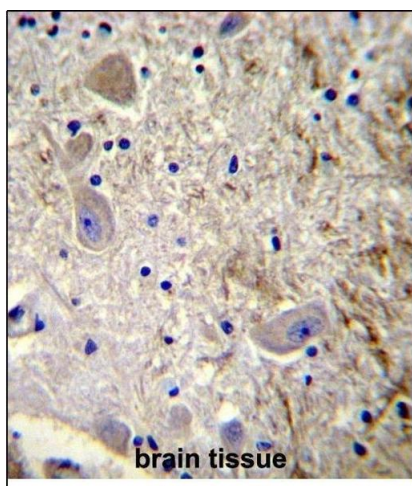
Preservative:	Sodium azide
---------------	--------------

Precaution of Use:	This product contains Sodium azide: a POISONOUS AND HAZARDOUS SUBSTANCE which should be handled by trained staff only.
--------------------	--

Storage:	4 °C,-20 °C
----------	-------------

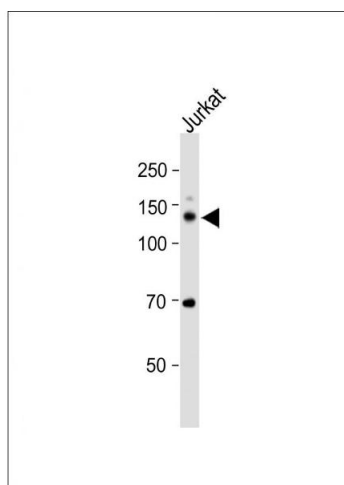
Storage Comment:	Maintain refrigerated at 2-8 °C for up to 6 months. For long term storage store at -20 °C in small aliquots to prevent freeze-thaw cycles.
------------------	--

Expiry Date:	6 months
--------------	----------



#### Immunohistochemistry (Paraffin-embedded Sections)

**Image 1.** GEL2 Antibody (C-term) (ABIN390122 and ABIN2840629) immunohistochemistry analysis in forlin fixed and paraffin embedded hun brain tissue followed by peroxidase conjugation of the secondary antibody and DAB staining. This data demonstrates the use of GEL2 Antibody (C-term) for immunohistochemistry. Clinical relevance has not been evaluated.



#### Western Blotting

**Image 2.** All lanes : Anti-GEL2 Antibody (C-term) at 1:2000 dilution + Jurkat whole cell lysate Lysates/proteins at 20 µg per lane. Secondary Goat Anti-Rabbit IgG, (H+L), Peroxidase conjugated (AS) at 1/15000 dilution. Observed band size : 130 kDa Blocking/Dilution buffer: 5 % NFDm/TBST.