



[Go to Product page](#)

Datasheet for ABIN390132

## anti-MLLT6 antibody (C-Term)

### 2 Images

#### Overview

|                      |  |
|----------------------|--|
| Quantity:            | 400 µL   |
| Target:              | MLLT6  |
| Binding Specificity: | AA 1056-1086, C-Term   |
| Reactivity:          | Human  |
| Host:                | Rabbit   |
| Clonality:           | Polyclonal   |
| Conjugate:           | This MLLT6 antibody is un-conjugated   |
| Application:         | Western Blotting (WB), Immunohistochemistry (Paraffin-embedded Sections) (IHC (p)) |

#### Product Details

|               |  |
|---------------|--|
| Immunogen:    | This MLLT6 antibody is generated from rabbits immunized with a KLH conjugated synthetic peptide between 1056-1086 amino acids from the C-terminal region of human MLLT6. |
| Clone:        | RB2251-2252  |
| Isotype:      | Ig Fraction  |
| Purification: | This antibody is prepared by Saturated Ammonium Sulfate (SAS) precipitation followed by dialysis against PBS.  |

#### Target Details

|                   |  |
|-------------------|--|
| Target:           | MLLT6                                    |
| Alternative Name: | MLLT6 ( <a href="#">MLLT6 Products</a> ) |

## Target Details

---

**Background:** Band 11q23 chromosome locations are associated with approximately 10 % of patients with acute lymphoblastic leukemia (ALL) and more than 5 % of patients with acute myeloid leukemia (AML). 11q23 translocation associated leukemias typically jointly express lymphoid and myeloid markers and exhibit poor prognosis. The gene at 11q23 involved in the translocations is known by multiple names, including ALL1, HRX, MLL, and TRX1. One of the more infrequent translocations, t(11,17)(q23,q21), MLLT6, encodes a protein of 1,093 amino acids, containing a leucine-zipper dimerization motif 3-prime to the fusion point and a cysteine-rich domain at the end terminus that can be arranged in 3 zinc fingers. MMLT6 contains amino acid runs associated with domains involved in transcriptional repression or activation. It has been proposed that MLLT6 represses truncated ALL1 function or inhibits function of the normal protein in leukemic cells.

---

**Molecular Weight:** 112048

---

**Gene ID:** 4302

---

**NCBI Accession:** [NP\\_005928](#)

---

**UniProt:** [P55198](#)

## Application Details

---

**Application Notes:** WB: 1:1000. IHC-P: 1:50~100

---

**Restrictions:** For Research Use only

## Handling

---

**Format:** Liquid

---

**Buffer:** Purified polyclonal antibody supplied in PBS with 0.09 % (W/V) sodium azide.

---

**Preservative:** Sodium azide

---

**Precaution of Use:** This product contains Sodium azide: a POISONOUS AND HAZARDOUS SUBSTANCE which should be handled by trained staff only.

---

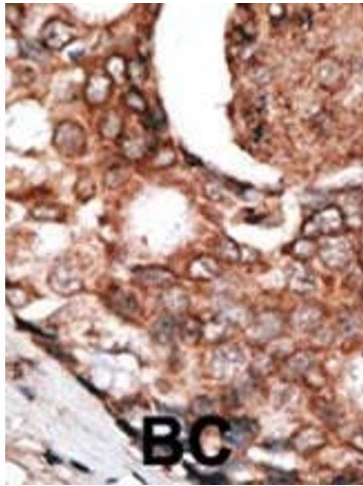
**Storage:** 4 °C,-20 °C

---

**Storage Comment:** Maintain refrigerated at 2-8 °C for up to 6 months. For long term storage store at -20 °C in small aliquots to prevent freeze-thaw cycles.

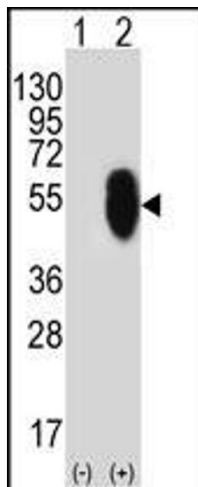
---

**Expiry Date:** 6 months



### Immunohistochemistry (Paraffin-embedded Sections)

**Image 1.** Formalin-fixed and paraffin-embedded human cancer tissue reacted with the primary antibody, which was peroxidase-conjugated to the secondary antibody, followed by DAB staining. This data demonstrates the use of this antibody for immunohistochemistry, clinical relevance has not been evaluated. BC = breast carcinoma, HC = hepatocarcinoma.



### Western Blotting

**Image 2.** Western blot analysis of MLLT6 (arrow) using rabbit polyclonal MLLT6 Antibody (ABIN390132 and ABIN2840636). 293 cell lysates (2 µg/lane) either nontransfected (Lane 1) or transiently transfected (Lane 2) with the MLLT6 gene.