

Datasheet for ABIN390145  
**anti-MMP24 antibody (AA 396-425)**[Go to Product page](#)

## 2 Images

## Overview

|                      |  |
|----------------------|--|
| Quantity:            | 400 µL   |
| Target:              | MMP24  |
| Binding Specificity: | AA 396-425   |
| Reactivity:          | Human  |
| Host:                | Rabbit   |
| Clonality:           | Polyclonal   |
| Conjugate:           | This MMP24 antibody is un-conjugated   |
| Application:         | Western Blotting (WB), Immunohistochemistry (Paraffin-embedded Sections) (IHC (p)) |

## Product Details

|                       |   |
|-----------------------|---|
| Immunogen:            | This MMP24 antibody is generated from rabbits immunized with a KLH conjugated synthetic peptide between 396-425 amino acids from the Central region of human MMP24. |
| Clone:                | RB2041-2042   |
| Isotype:              | Ig Fraction   |
| Predicted Reactivity: | M, Rat  |
| Purification:         | This antibody is prepared by Saturated Ammonium Sulfate (SAS) precipitation followed by dialysis against PBS.   |

## Target Details

|         |       |
|---------|-------|
| Target: | MMP24 |
|---------|-------|

## Target Details

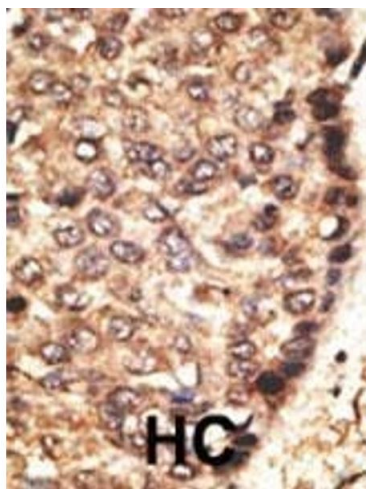
|                   |   |
|-------------------|---|
| Alternative Name: | MMP24 ( <a href="#">MMP24 Products</a> )  |
| Background:       | Proteins of the matrix metalloproteinase (MMP) family are involved in the breakdown of extracellular matrix in normal physiological processes, such as embryonic development, reproduction, and tissue remodeling, as well as in disease processes, such as arthritis and metastasis. Most MMPs are secreted as inactive proproteins which are activated when cleaved by extracellular proteinases. However, MMP24 is a member of the membrane-type MMP (MT-MMP) subfamily, each member of this subfamily contains a potential transmembrane domain suggesting that these proteins are expressed at the cell surface rather than secreted. This protein activates MMP2 by cleavage. The gene has previously been referred to as MMP25 but has been renamed matrix metalloproteinase 24 (MMP24). |
| Molecular Weight: | 73231   |
| Gene ID:          | 10893   |
| NCBI Accession:   | <a href="#">NP_006681</a>   |
| UniProt:          | <a href="#">Q9Y5R2</a>  |

## Application Details

|                    |                             |
|--------------------|-----------------------------|
| Application Notes: | WB: 1:1000. IHC-P: 1:50~100 |
| Restrictions:      | For Research Use only       |

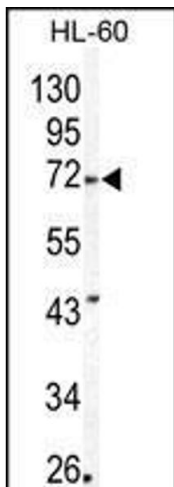
## Handling

|                    |  |
|--------------------|--|
| Format:            | Liquid   |
| Buffer:            | Purified polyclonal antibody supplied in PBS with 0.09 % (W/V) sodium azide.   |
| Preservative:      | Sodium azide   |
| Precaution of Use: | This product contains Sodium azide: a POISONOUS AND HAZARDOUS SUBSTANCE which should be handled by trained staff only.                     |
| Storage:           | 4 °C,-20 °C  |
| Storage Comment:   | Maintain refrigerated at 2-8 °C for up to 6 months. For long term storage store at -20 °C in small aliquots to prevent freeze-thaw cycles. |
| Expiry Date:       | 6 months   |



**Immunohistochemistry (Paraffin-embedded Sections)**

**Image 1.** Formalin-fixed and paraffin-embedded human cancer tissue reacted with the primary antibody, which was peroxidase-conjugated to the secondary antibody, followed by AEC staining. This data demonstrates the use of this antibody for immunohistochemistry, clinical relevance has not been evaluated. BC = breast carcinoma, HC = hepatocarcinoma.



**Western Blotting**

**Image 2.** Western blot analysis of P24 Antibody (Center) (ABIN390145 and ABIN2840648) in HL60 cell line lysates (35 µg/lane). P24 (arrow) was detected using the purified Pab.