

Datasheet for ABIN390146  
**anti-MMP25 antibody (C-Term)**[Go to Product page](#)

## 1 Image

## Overview

Quantity:	400 µL
Target:	MMP25
Binding Specificity:	AA 470-499, C-Term
Reactivity:	Human, Mouse
Host:	Rabbit
Clonality:	Polyclonal
Conjugate:	This MMP25 antibody is un-conjugated
Application:	Western Blotting (WB)

## Product Details

Immunogen:	This MMP25 antibody is generated from rabbits immunized with a KLH conjugated synthetic peptide between 470-499 amino acids from the C-terminal region of human MMP25.
Clone:	RB2043
Isotype:	Ig Fraction
Purification:	This antibody is prepared by Saturated Ammonium Sulfate (SAS) precipitation followed by dialysis against PBS.

## Target Details

Target:	MMP25
Alternative Name:	MMP25 ( <a href="#">MMP25 Products</a> )

## Target Details

**Background:** Proteins of the matrix metalloproteinase (MMP) family are involved in the breakdown of extracellular matrix in normal physiological processes, such as embryonic development, reproduction, and tissue remodeling, as well as in disease processes, such as arthritis and metastasis. Most MMPs are secreted as inactive proproteins which are activated when cleaved by extracellular proteinases. However, MMP25 is a member of the membrane-type MMP (MT-MMP) subfamily, each member of this subfamily contains a potential transmembrane domain suggesting that these proteins are expressed at the cell surface rather than secreted. In addition, it is thought that this protein is activated intracellularly by furin-like enzymes. This protein activates MMP2 by cleavage. The gene has previously been referred to as MMP20 but has been renamed matrix metalloproteinase 25 (MMP25).

**Molecular Weight:** 62554

**Gene ID:** 64386

**NCBI Accession:** [NP\\_071913](#)

**UniProt:** [Q9NPA2](#)

## Application Details

**Application Notes:** WB: 1:1000

**Restrictions:** For Research Use only

## Handling

**Format:** Liquid

**Buffer:** Purified polyclonal antibody supplied in PBS with 0.09 % (W/V) sodium azide.

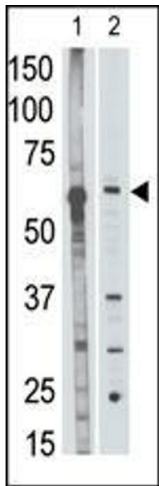
**Preservative:** Sodium azide

**Precaution of Use:** This product contains Sodium azide: a POISONOUS AND HAZARDOUS SUBSTANCE which should be handled by trained staff only.

**Storage:** 4 °C, -20 °C

**Storage Comment:** Maintain refrigerated at 2-8 °C for up to 6 months. For long term storage store at -20 °C in small aliquots to prevent freeze-thaw cycles.

**Expiry Date:** 6 months



Western Blotting

**Image 1.** The anti-P25 C-term Antibody (ABIN390146 and ABIN2840649) is used in Western blot to detect P25 in mouse liver tissue lysate (lane 1) and HL60 cell lysate (lane 2) lysate.