

Datasheet for ABIN390172
anti-SMYD5 antibody (C-Term)[Go to Product page](#)

3 Images

Overview

Quantity:	400 µL
Target:	SMYD5
Binding Specificity:	AA 341-371, C-Term
Reactivity:	Human, Mouse
Host:	Rabbit
Clonality:	Polyclonal
Conjugate:	This SMYD5 antibody is un-conjugated
Application:	Western Blotting (WB), Immunohistochemistry (Paraffin-embedded Sections) (IHC (p))

Product Details

Immunogen:	This SMYD5 (RAI15) antibody is generated from rabbits immunized with a KLH conjugated synthetic peptide between 341-371 amino acids from the C-terminal region of human SMYD5 (RAI15).
Clone:	RB2259
Isotype:	Ig Fraction
Purification:	This antibody is prepared by Saturated Ammonium Sulfate (SAS) precipitation followed by dialysis against PBS.

Target Details

Target:	SMYD5
Alternative Name:	SMYD5 (RAI15) (SMYD5 Products)

Target Details

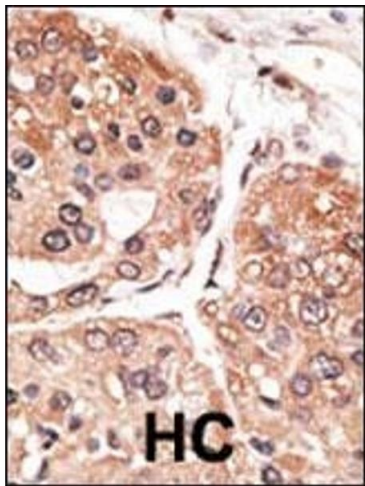
Background:	Retinoic acid plays a critical role in development, cellular growth, and differentiation. The specific function of the protein for this intronless, retinoic acid-induced gene has not yet been determined, however, it has been suggested to play a role in development.
Molecular Weight:	47341
Gene ID:	10322
NCBI Accession:	NP_006053
UniProt:	Q6GMV2

Application Details

Application Notes:	WB: 1:1000. WB: 1:1000. IHC-P: 1:50~100
Restrictions:	For Research Use only

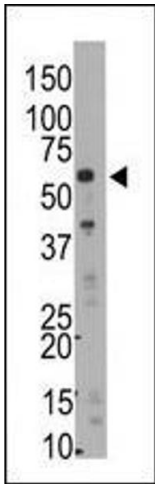
Handling

Format:	Liquid
Buffer:	Purified polyclonal antibody supplied in PBS with 0.09 % (W/V) sodium azide.
Preservative:	Sodium azide
Precaution of Use:	This product contains Sodium azide: a POISONOUS AND HAZARDOUS SUBSTANCE which should be handled by trained staff only.
Storage:	4 °C, -20 °C
Storage Comment:	Maintain refrigerated at 2-8 °C for up to 6 months. For long term storage store at -20 °C in small aliquots to prevent freeze-thaw cycles.
Expiry Date:	6 months



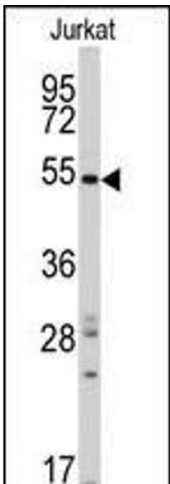
Immunohistochemistry (Paraffin-embedded Sections)

Image 1. Formalin-fixed and paraffin-embedded human cancer tissue reacted with the primary antibody, which was peroxidase-conjugated to the secondary antibody, followed by DAB staining. This data demonstrates the use of this antibody for immunohistochemistry, clinical relevance has not been evaluated. BC = breast carcinoma, HC = hepatocarcinoma.



Western Blotting

Image 2. The anti-Rai15 C-term Pab (ABIN390172 and ABIN2840666) is used in Western blot to detect Rai15 in mouse liver tissue lysate.



Western Blotting

Image 3. Western blot analysis of anti-RAI15 Antibody (C-term) (ABIN390172 and ABIN2840666) in Jurkat cell line lysates (35 µg/lane).RAI15(arrow) was detected using the purified Pab.