

Datasheet for ABIN390187
anti-WISP1 antibody (AA 171-200)[Go to Product page](#)

2 Images

1 Publication

Overview

Quantity:	400 µL
Target:	WISP1
Binding Specificity:	AA 171-200
Reactivity:	Human
Host:	Rabbit
Clonality:	Polyclonal
Conjugate:	This WISP1 antibody is un-conjugated
Application:	Western Blotting (WB), Immunohistochemistry (Paraffin-embedded Sections) (IHC (p))

Product Details

Immunogen:	This WISP1 antibody is generated from rabbits immunized with a KLH conjugated synthetic peptide between 171-200 amino acids from the Central region of human WISP1.
Clone:	RB2115-2116
Isotype:	Ig Fraction
Purification:	This antibody is prepared by Saturated Ammonium Sulfate (SAS) precipitation followed by dialysis against PBS.

Target Details

Target:	WISP1
Alternative Name:	WISP1 (WISP1 Products)

Target Details

Background:	Wisp1 is a member of the WNT1 inducible signaling pathway (WISP) protein subfamily, which belongs to the connective tissue growth factor (CTGF) family. WNT1 is a member of a family of cysteine-rich, glycosylated signaling proteins that mediate diverse developmental processes. The CTGF family members are characterized by four conserved cysteine-rich domains: insulin-like growth factor-binding domain, von Willebrand factor type C module, thrombospondin domain and C-terminal cystine knot-like domain. Wisp1 may be downstream in the WNT1 signaling pathway that is relevant to malignant transformation. It is expressed at a high level in fibroblast cells, and overexpressed in colon tumors. The encoded protein binds to decorin and biglycan, two members of a family of small leucine-rich proteoglycans present in the extracellular matrix of connective tissue, and possibly prevents the inhibitory activity of decorin and biglycan in tumor cell proliferation. It also attenuates p53-mediated apoptosis in response to DNA damage through activation of the Akt kinase. It is 83 % identical to the mouse protein at the amino acid level.
Molecular Weight:	40331
Gene ID:	8840
NCBI Accession:	NP_001191798 , NP_001191799 , NP_003873 , NP_543028
UniProt:	O95388
Pathways:	WNT Signaling , Growth Factor Binding

Application Details

Application Notes:	WB: 1:1000. IHC-P: 1:50~100
Restrictions:	For Research Use only

Handling

Format:	Liquid
Buffer:	Purified polyclonal antibody supplied in PBS with 0.09 % (W/V) sodium azide.
Preservative:	Sodium azide
Precaution of Use:	This product contains Sodium azide: a POISONOUS AND HAZARDOUS SUBSTANCE which should be handled by trained staff only.
Storage:	4 °C,-20 °C
Storage Comment:	Maintain refrigerated at 2-8 °C for up to 6 months. For long term storage store at -20 °C in small

Handling

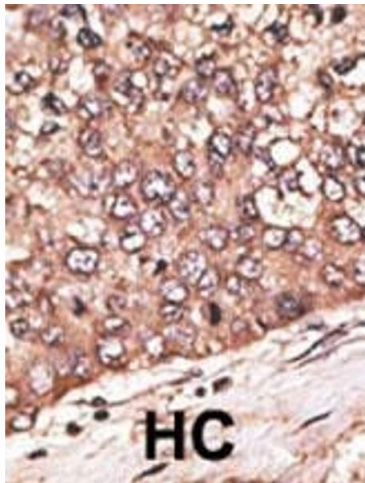
aliquots to prevent freeze-thaw cycles.

Expiry Date: 6 months

Publications

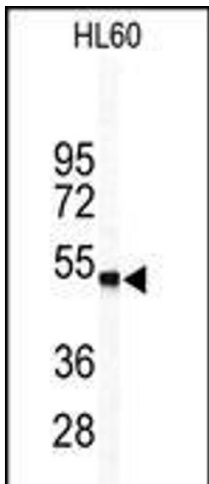
Product cited in: Xu, Han, Epstein, Liu: "Regulation of PDK mRNA by high fatty acid and glucose in pancreatic islets." in: **Biochemical and biophysical research communications**, Vol. 344, Issue 3, pp. 827-33, (2006) ([PubMed](#)).

Images



Immunohistochemistry (Paraffin-embedded Sections)

Image 1. Formalin-fixed and paraffin-embedded human cancer tissue reacted with the primary antibody, which was peroxidase-conjugated to the secondary antibody, followed by DAB staining. This data demonstrates the use of this antibody for immunohistochemistry, clinical relevance has not been evaluated. BC = breast carcinoma, HC = hepatocarcinoma.



Western Blotting

Image 2. Western blot analysis of WISP1 Antibody (Center) (ABIN390187 and ABIN2840678) in HL60 cell line lysates (35 µg/lane). WISP1 (arrow) was detected using the purified Pab.