



Datasheet for ABIN390189  
**anti-WISP3 antibody (AA 305-335)**



[Go to Product page](#)

2 Images

1 Publication

## Overview

Quantity:	400 µL
Target:	WISP3
Binding Specificity:	AA 305-335
Reactivity:	Human
Host:	Rabbit
Clonality:	Polyclonal
Conjugate:	This WISP3 antibody is un-conjugated
Application:	Western Blotting (WB), Immunohistochemistry (Paraffin-embedded Sections) (IHC (p))

## Product Details

Immunogen:	This WISP3 antibody is generated from rabbits immunized with a KLH conjugated synthetic peptide between 305-335 amino acids from the Central region of human WISP3.
Clone:	RB2145-2146
Isotype:	Ig Fraction
Purification:	This antibody is prepared by Saturated Ammonium Sulfate (SAS) precipitation followed by dialysis against PBS.

## Target Details

Target:	WISP3
Alternative Name:	WISP3 ( <a href="#">WISP3 Products</a> )

## Target Details

---

**Background:** WISP3 is a member of the WNT1 inducible signaling pathway (WISP) protein subfamily, which belongs to the connective tissue growth factor (CTGF) family. WNT1 is a member of a family of cysteine-rich, glycosylated signaling proteins that mediate diverse developmental processes. The CTGF family members are characterized by four conserved cysteine-rich domains: insulin-like growth factor-binding domain, von Willebrand factor type C module, thrombospondin domain and C-terminal cystine knot-like domain. WISP3 is overexpressed in colon tumors. It may be downstream in the WNT1 signaling pathway that is relevant to malignant transformation. Mutations of the WISP3 gene are associated with progressive pseudorheumatoid dysplasia, an autosomal recessive skeletal disorder, indicating that the gene is essential for normal postnatal skeletal growth and cartilage homeostasis.

---

**Molecular Weight:** 39293

---

**Gene ID:** 8838

---

**NCBI Accession:** [NP\\_003871](#), [NP\\_937882](#)

---

**UniProt:** [O95389](#)

---

**Pathways:** [WNT Signaling](#), [Growth Factor Binding](#)

## Application Details

---

**Application Notes:** WB: 1:1000. IHC-P: 1:50~100

---

**Restrictions:** For Research Use only

## Handling

---

**Format:** Liquid

---

**Buffer:** Purified polyclonal antibody supplied in PBS with 0.09 % (W/V) sodium azide.

---

**Preservative:** Sodium azide

---

**Precaution of Use:** This product contains Sodium azide: a POISONOUS AND HAZARDOUS SUBSTANCE which should be handled by trained staff only.

---

**Storage:** 4 °C,-20 °C

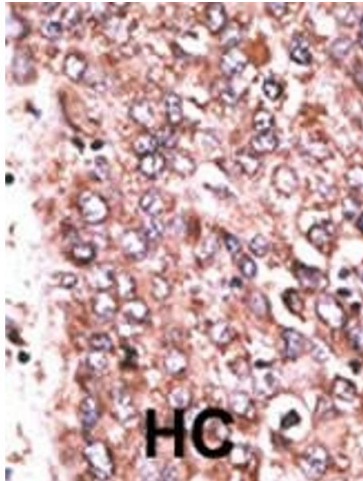
---

**Storage Comment:** Maintain refrigerated at 2-8 °C for up to 6 months. For long term storage store at -20 °C in small aliquots to prevent freeze-thaw cycles.

---

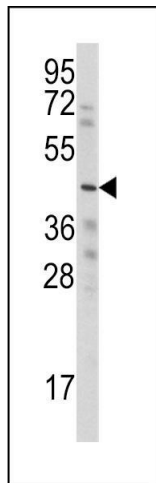
**Expiry Date:** 6 months

Product cited in: Xu, Han, Epstein, Liu: "Regulation of PDK mRNA by high fatty acid and glucose in pancreatic islets." in **Biochemical and biophysical research communications**, Vol. 344, Issue 3, pp. 827-33, (2006) ([PubMed](#)).



#### Immunohistochemistry (Paraffin-embedded Sections)

**Image 1.** Formalin-fixed and paraffin-embedded human cancer tissue reacted with the primary antibody, which was peroxidase-conjugated to the secondary antibody, followed by DAB staining. This data demonstrates the use of this antibody for immunohistochemistry, clinical relevance has not been evaluated. BC = breast carcinoma, HC = hepatocarcinoma.



#### Western Blotting

**Image 2.** Western blot analysis of anti-WISP3 Antibody (Center) (ABIN390189 and ABIN2840680) in HepG2 cell line lysates (35 µg/lane). WISP3 (arrow) was detected using the purified Pab.