

Datasheet for ABIN390190  
**anti-PDAP1 antibody (C-Term)**[Go to Product page](#)

## 2 Images

## Overview

Quantity:	400 µL
Target:	PDAP1
Binding Specificity:	AA 142-171, C-Term
Reactivity:	Human
Host:	Rabbit
Clonality:	Polyclonal
Conjugate:	This PDAP1 antibody is un-conjugated
Application:	Western Blotting (WB)

## Product Details

Immunogen:	This PDAP1 antibody is generated from rabbits immunized with a KLH conjugated synthetic peptide between 142-171 amino acids from the C-terminal region of human PDAP1.
Clone:	RB1995
Isotype:	Ig Fraction
Predicted Reactivity:	M, Rat
Purification:	This antibody is prepared by Saturated Ammonium Sulfate (SAS) precipitation followed by dialysis against PBS.

## Target Details

Target:	PDAP1
---------	-------

## Target Details

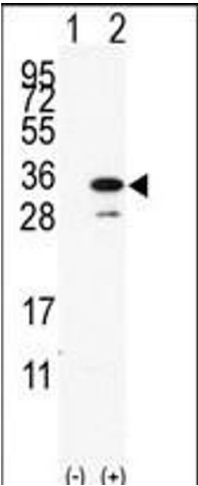
Alternative Name:	PDAP1 ( <a href="#">PDAP1 Products</a> )
Background:	Human PDAP1 encodes a deduced 181-amino acid protein expressed in all tissues test with the exception of liver, most abundantly in brain. PDAP1 enhances PDGFA-stimulated cell growth in mouse fibroblasts, but inhibits the mitogenic effect of PDGFB. The binding between PDGFA and PDAP1 is a low affinity/high capacity interaction, as determined by sold-phase studies.
Molecular Weight:	20630
Gene ID:	11333
NCBI Accession:	<a href="#">NP_055706</a>
UniProt:	<a href="#">Q13442</a>
Pathways:	<a href="#">Platelet-derived growth Factor Receptor Signaling</a>

## Application Details

Application Notes:	WB: 1:1000. WB: 1:1000
Restrictions:	For Research Use only

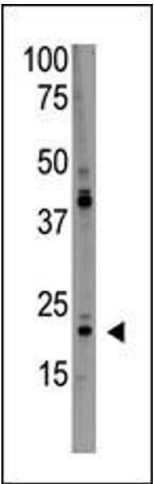
## Handling

Format:	Liquid
Buffer:	Purified polyclonal antibody supplied in PBS with 0.09 % (W/V) sodium azide.
Preservative:	Sodium azide
Precaution of Use:	This product contains Sodium azide: a POISONOUS AND HAZARDOUS SUBSTANCE which should be handled by trained staff only.
Storage:	4 °C,-20 °C
Storage Comment:	Maintain refrigerated at 2-8 °C for up to 6 months. For long term storage store at -20 °C in small aliquots to prevent freeze-thaw cycles.
Expiry Date:	6 months



#### Western Blotting

**Image 1.** Western blot analysis of PD (arrow) using rabbit polyclonal PD Antibody (C-term) (ABIN390190 and ABIN2840681). 293 cell lysates (2 µg/lane) either nontransfected (Lane 1) or transiently transfected with the PD gene (Lane 2) (Origene Technologies).



#### Western Blotting

**Image 2.** The anti-PD Antibody (C-term) (ABIN390190 and ABIN2840681) is used in Western blot to detect PD in HL60 lysate.