

Datasheet for ABIN390196
anti-PDGFD antibody (AA 313-341)[Go to Product page](#)

4 Images

Overview

Quantity:	400 µL
Target:	PDGFD
Binding Specificity:	AA 313-341
Reactivity:	Human
Host:	Rabbit
Clonality:	Polyclonal
Conjugate:	This PDGFD antibody is un-conjugated
Application:	Western Blotting (WB), Immunohistochemistry (Paraffin-embedded Sections) (IHC (p))

Product Details

Immunogen:	This SCDGFB antibody is generated from rabbits immunized with a KLH conjugated synthetic peptide between 313-341 amino acids from the Central region of rat SCDGFB.
Clone:	RB2007-2008
Isotype:	Ig Fraction
Predicted Reactivity:	M, Rb
Purification:	This antibody is purified through a protein A column, followed by peptide affinity purification.

Target Details

Target:	PDGFD
Alternative Name:	SCDGFB (PDGFD Products)

Target Details

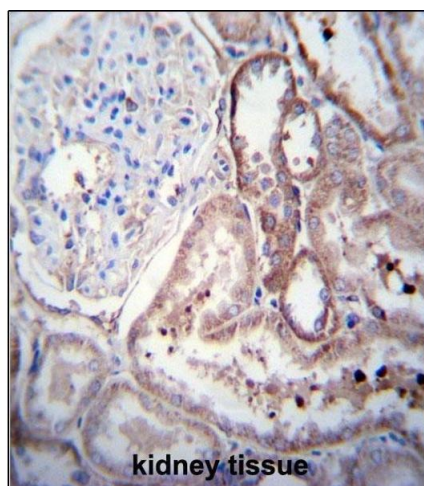
Molecular Weight:	42809
Gene ID:	66018
NCBI Accession:	NP_076452
UniProt:	Q9EQT1
Pathways:	RTK Signaling, Platelet-derived growth Factor Receptor Signaling

Application Details

Application Notes:	WB: 1:1000. WB: 1:1000. IHC-P: 1:10~50. IHC-P: 1:10~50
Restrictions:	For Research Use only

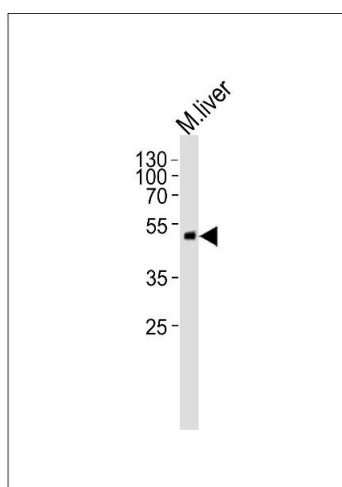
Handling

Format:	Liquid
Buffer:	Purified polyclonal antibody supplied in PBS with 0.09 % (W/V) sodium azide.
Preservative:	Sodium azide
Precaution of Use:	This product contains Sodium azide: a POISONOUS AND HAZARDOUS SUBSTANCE which should be handled by trained staff only.
Storage:	4 °C,-20 °C
Storage Comment:	Maintain refrigerated at 2-8 °C for up to 6 months. For long term storage store at -20 °C in small aliquots to prevent freeze-thaw cycles.
Expiry Date:	6 months



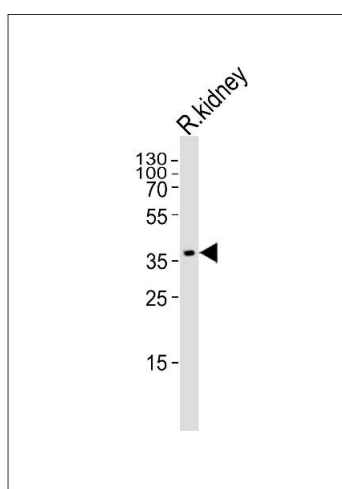
Immunohistochemistry (Paraffin-embedded Sections)

Image 1. SCDGFB Antibody (Center) (ABIN390196 and ABIN2840684) immunohistochemistry analysis in formalin fixed and paraffin embedded human kidney tissue followed by peroxidase conjugation of the secondary antibody and DAB staining. This data demonstrates the use of SCDGFB Antibody (Center) for immunohistochemistry. Clinical relevance has not been evaluated.



Western Blotting

Image 2. Western blot analysis of lysate from mouse liver tissue lysate, using SCDGFB Antibody (Center) A. A was diluted at 1:1000. A goat anti-rabbit IgG H&L(HRP) at 1:10000 dilution was used as the secondary antibody. Lysate at 35 µg.



Western Blotting

Image 3. Western blot analysis of lysate from rat kidney tissue lysate, using SCDGFB Antibody (Center) A. A was diluted at 1:1000. A goat anti-rabbit IgG H&L(HRP) at 1:5000 dilution was used as the secondary antibody. Lysate at 35 µg.

Please check the [product details page](#) for more images. Overall 4 images are available for ABIN390196.