

Datasheet for ABIN390219  
**anti-TOB2 antibody (N-Term)**

## 2 Images

[Go to Product page](#)

## Overview

Quantity:	400 µL
Target:	TOB2
Binding Specificity:	AA 17-46, N-Term
Reactivity:	Human
Host:	Rabbit
Clonality:	Polyclonal
Conjugate:	This TOB2 antibody is un-conjugated
Application:	Western Blotting (WB), Immunohistochemistry (Paraffin-embedded Sections) (IHC (p))

## Product Details

Immunogen:	This TOB2 antibody is generated from rabbits immunized with a KLH conjugated synthetic peptide between 17-46 amino acids from the N-terminal region of human TOB2.
Clone:	RB12392
Isotype:	Ig Fraction
Predicted Reactivity:	M
Purification:	This antibody is prepared by Saturated Ammonium Sulfate (SAS) precipitation followed by dialysis against PBS.

## Target Details

Target:	TOB2
---------	------

## Target Details

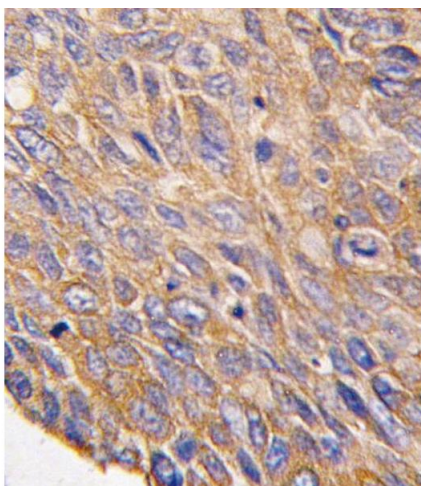
Alternative Name:	TOB2 ( <a href="#">TOB2 Products</a> )
Background:	TOB2 belongs to the TOB /BTG1 family of antiproliferative proteins, which are involved in the regulation of cell cycle progression.
Molecular Weight:	36632
Gene ID:	10766
NCBI Accession:	<a href="#">NP_057356</a>
UniProt:	<a href="#">Q14106</a>
Pathways:	<a href="#">Nuclear Hormone Receptor Binding</a>

## Application Details

Application Notes:	WB: 1:1000. IHC-P: 1:10~50
Restrictions:	For Research Use only

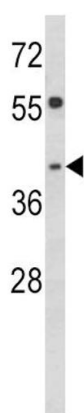
## Handling

Format:	Liquid
Buffer:	Purified polyclonal antibody supplied in PBS with 0.09 % (W/V) sodium azide.
Preservative:	Sodium azide
Precaution of Use:	This product contains Sodium azide: a POISONOUS AND HAZARDOUS SUBSTANCE which should be handled by trained staff only.
Storage:	4 °C,-20 °C
Storage Comment:	Maintain refrigerated at 2-8 °C for up to 6 months. For long term storage store at -20 °C in small aliquots to prevent freeze-thaw cycles.
Expiry Date:	6 months



#### Immunohistochemistry (Paraffin-embedded Sections)

**Image 1.** Formalin-fixed and paraffin-embedded human lung carcinoma tissue reacted with TOB2 antibody (N-term) (ABIN390219 and ABIN2840699) , which was peroxidase-conjugated to the secondary antibody, followed by DAB staining. This data demonstrates the use of this antibody for immunohistochemistry, clinical relevance has not been evaluated.



#### Western Blotting

**Image 2.** Western blot analysis of TOB2 Antibody (N-term) (ABIN390219 and ABIN2840699) in HepG2 cell line lysates (35 µg/lane). TOB2 (arrow) was detected using the purified Pab.