



[Go to Product page](#)

Datasheet for ABIN390222
anti-HES1 antibody (N-Term)

3 Images

Overview

Quantity:	400 µL
Target:	HES1
Binding Specificity:	AA 9-38, N-Term
Reactivity:	Human
Host:	Rabbit
Clonality:	Polyclonal
Conjugate:	This HES1 antibody is un-conjugated
Application:	Western Blotting (WB), Flow Cytometry (FACS), Immunofluorescence (IF)

Product Details

Immunogen:	This HES1 antibody is generated from rabbits immunized with a KLH conjugated synthetic peptide between 9-38 amino acids from the N-terminal region of human HES1.
Clone:	RB13980
Isotype:	Ig Fraction
Predicted Reactivity:	X, B, M, Rat
Purification:	This antibody is prepared by Saturated Ammonium Sulfate (SAS) precipitation followed by dialysis against PBS.

Target Details

Target:	HES1
---------	------

Target Details

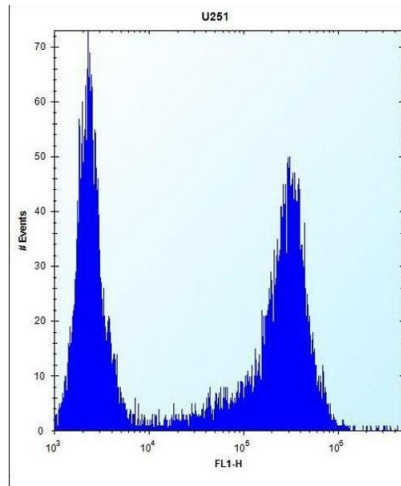
Alternative Name:	HES1 (HES1 Products)
Background:	HES1 belongs to the basic helix-loop-helix family of transcription factors. It is a transcriptional repressor of genes that require a bHLH protein for their transcription. HES1 has a particular type of basic domain that contains a helix interrupting protein that binds to the N-box rather than the canonical E-box.
Molecular Weight:	29541
Gene ID:	3280
NCBI Accession:	NP_005515
UniProt:	Q14469
Pathways:	DNA Damage Repair

Application Details

Application Notes:	IF: 1:10~50. WB: 1:1000. FC: 1:10~50
Restrictions:	For Research Use only

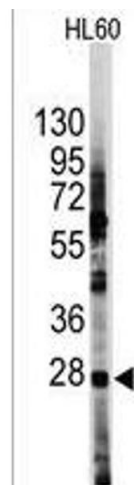
Handling

Format:	Liquid
Buffer:	Purified polyclonal antibody supplied in PBS with 0.09 % (W/V) sodium azide.
Preservative:	Sodium azide
Precaution of Use:	This product contains Sodium azide: a POISONOUS AND HAZARDOUS SUBSTANCE which should be handled by trained staff only.
Storage:	4 °C, -20 °C
Storage Comment:	Maintain refrigerated at 2-8 °C for up to 6 months. For long term storage store at -20 °C in small aliquots to prevent freeze-thaw cycles.
Expiry Date:	6 months



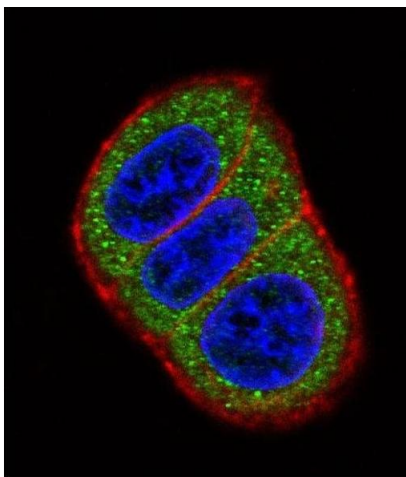
Flow Cytometry

Image 1. HES1 Antibody (N-term T24) (ABIN390222 and ABIN2840700) flow cytometric analysis of cells (right histogram) compared to a negative control cell (left histogram). FITC-conjugated goat-anti-rabbit secondary antibodies were used for the analysis.



Western Blotting

Image 2. Western blot analysis of anti-HES1 Antibody (N-term T24) (R) in HL60 cell line lysates (35 µg/lane). HES1 (arrow) was detected using the purified Pab.



Immunofluorescence

Image 3. Confocal immunofluorescent analysis of HES1 Antibody (N-term T24) (ABIN390222 and ABIN2840700) with HeLa cells followed by Alexa Fluor 488-conjugated goat anti-rabbit IgG (green). Actin filaments have been labeled with Alexa Fluor 555 phalloidin (red). DAPI was used to stain the cell nuclei (blue).