



Datasheet for ABIN390225
anti-SOX30 antibody (AA 373-403)



[Go to Product page](#)

1 Image

Overview

Quantity:	400 µL
Target:	SOX30
Binding Specificity:	AA 373-403
Reactivity:	Human
Host:	Rabbit
Clonality:	Polyclonal
Conjugate:	This SOX30 antibody is un-conjugated
Application:	Western Blotting (WB)

Product Details

Immunogen:	This SOX30 antibody is generated from rabbits immunized with a KLH conjugated synthetic peptide between 373-403 amino acids from the Central region of human SOX30.
Clone:	RB14027
Isotype:	Ig Fraction
Predicted Reactivity:	M
Purification:	This antibody is prepared by Saturated Ammonium Sulfate (SAS) precipitation followed by dialysis against PBS.

Target Details

Target:	SOX30
---------	-------

Target Details

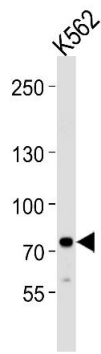
Alternative Name:	SOX30 (SOX30 Products)
Background:	SOX30 is a member of the SOX (SRY-related HMG-box) family of transcription factors involved in the regulation of embryonic development and in the determination of the cell fate. SOX30 may act as a transcriptional regulator after forming a protein complex with other proteins, and it may be involved in the differentiation of developing male germ cells.
Molecular Weight:	81854
Gene ID:	11063
NCBI Accession:	NP_008948 , NP_848511
UniProt:	O94993

Application Details

Application Notes:	WB: 1:1000
Restrictions:	For Research Use only

Handling

Format:	Liquid
Buffer:	Purified polyclonal antibody supplied in PBS with 0.09 % (W/V) sodium azide.
Preservative:	Sodium azide
Precaution of Use:	This product contains Sodium azide: a POISONOUS AND HAZARDOUS SUBSTANCE which should be handled by trained staff only.
Storage:	4 °C,-20 °C
Storage Comment:	Maintain refrigerated at 2-8 °C for up to 6 months. For long term storage store at -20 °C in small aliquots to prevent freeze-thaw cycles.
Expiry Date:	6 months



Western Blotting

Image 1. Western blot analysis of lysate from K562 cell line, using SOX30 Antibody (Center) (ABIN390225 and ABIN2840702). (ABIN390225 and ABIN2840702) was diluted at 1:1000 at each lane. A goat anti-rabbit IgG H&L(HRP) at 1:5000 dilution was used as the secondary antibody. Lysate at 35 µg per lane.