

Datasheet for ABIN390232

anti-Ectodysplasin A antibody (N-Term)**3** Images[Go to Product page](#)

Overview

Quantity:	400 µL
Target:	Ectodysplasin A (EDA)
Binding Specificity:	AA 47-76, N-Term
Reactivity:	Human
Host:	Rabbit
Clonality:	Polyclonal
Conjugate:	This Ectodysplasin A antibody is un-conjugated
Application:	Western Blotting (WB), Flow Cytometry (FACS), Immunohistochemistry (Paraffin-embedded Sections) (IHC (p))

Product Details

Immunogen:	This EDA antibody is generated from rabbits immunized with a KLH conjugated synthetic peptide between 47-76 amino acids from the N-terminal region of human EDA.
Clone:	RB13883
Isotype:	Ig Fraction
Predicted Reactivity:	B
Purification:	This antibody is purified through a protein A column, followed by peptide affinity purification.

Target Details

Target:	Ectodysplasin A (EDA)
---------	-----------------------

Target Details

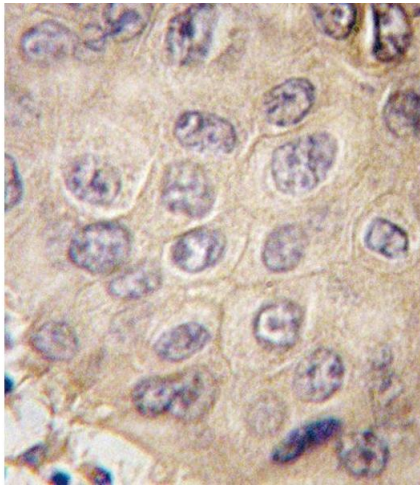
Alternative Name:	EDA (EDA Products)
Background:	EDA is a type II membrane protein that can be cleaved by furin to produce a secreted form. This protein, which belongs to the tumor necrosis factor family, acts as a homotrimer and may be involved in cell-cell signaling during the development of ectodermal organs. Defects in the gene for EDA are a cause of ectodermal dysplasia, anhidrotic, which is also known as X-linked hypohidrotic ectodermal dysplasia.
Molecular Weight:	41294
Gene ID:	1896
NCBI Accession:	NP_001005609 , NP_001005610 , NP_001005612 , NP_001005613 , NP_001390
UniProt:	Q92838
Pathways:	Tube Formation

Application Details

Application Notes:	WB: 1:1000. IHC-P: 1:10~50. FC: 1:10~50
Restrictions:	For Research Use only

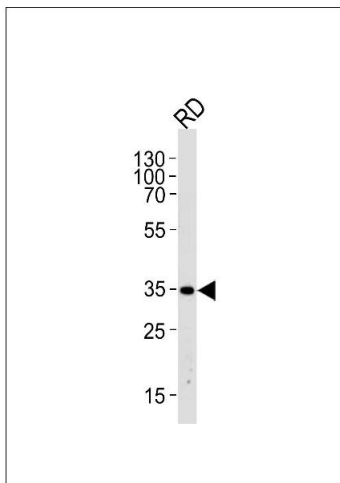
Handling

Format:	Liquid
Buffer:	Purified polyclonal antibody supplied in PBS with 0.09 % (W/V) sodium azide.
Preservative:	Sodium azide
Precaution of Use:	This product contains Sodium azide: a POISONOUS AND HAZARDOUS SUBSTANCE which should be handled by trained staff only.
Storage:	4 °C,-20 °C
Storage Comment:	Maintain refrigerated at 2-8 °C for up to 6 months. For long term storage store at -20 °C in small aliquots to prevent freeze-thaw cycles.
Expiry Date:	6 months



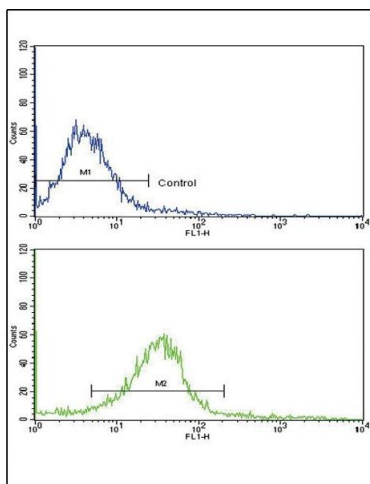
Immunohistochemistry (Paraffin-embedded Sections)

Image 1. Formalin-fixed and paraffin-embedded human hepatocarcinoma tissue reacted with EDA antibody (N-term) (ABIN390232 and ABIN2840705), which was peroxidase-conjugated to the secondary antibody, followed by DAB staining. This data demonstrates the use of this antibody for immunohistochemistry, clinical relevance has not been evaluated.



Western Blotting

Image 2. Western blot analysis of lysate from RD cell line, using EDA Antibody (N-term) (ABIN390232 and ABIN2840705). (ABIN390232 and ABIN2840705) was diluted at 1:1000 at each lane. A goat anti-rabbit IgG H&L(HRP) at 1:5000 dilution was used as the secondary antibody. Lysate at 35 µg per lane.



Flow Cytometry

Image 3. Flow cytometric analysis of hela cells using EDA Antibody (N-term) (bottom histogram) compared to a negative control cell (top histogram). FITC-conjugated goat-anti-rabbit secondary antibodies were used for the analysis.