

Datasheet for ABIN390238
anti-GRB2 antibody (AA 89-118)

3 Images

[Go to Product page](#)

Overview

Quantity:	400 µL
Target:	GRB2
Binding Specificity:	AA 89-118
Reactivity:	Human
Host:	Rabbit
Clonality:	Polyclonal
Conjugate:	This GRB2 antibody is un-conjugated
Application:	Western Blotting (WB), Immunohistochemistry (Paraffin-embedded Sections) (IHC (p))

Product Details

Immunogen:	This GRB2 antibody is generated from rabbits immunized with a KLH conjugated synthetic peptide between 89-118 amino acids from the Central region of human GRB2.
Clone:	RB15648
Isotype:	Ig Fraction
Predicted Reactivity:	X, M, Rat
Purification:	This antibody is prepared by Saturated Ammonium Sulfate (SAS) precipitation followed by dialysis against PBS.

Target Details

Target:	GRB2
---------	------

Target Details

Alternative Name:	GRB2 (GRB2 Products)
Background:	GRB2 binds the epidermal growth factor receptor and contains one SH2 domain and two SH3 domains. Its two SH3 domains direct complex formation with proline-rich regions of other proteins, and its SH2 domain binds tyrosine phosphorylated sequences.
Molecular Weight:	25206
Gene ID:	2885
NCBI Accession:	NP_002077 , NP_987102
UniProt:	P62993
Pathways:	RTK Signaling , TCR Signaling , Fc-epsilon Receptor Signaling Pathway , EGFR Signaling Pathway , Neurotrophin Signaling Pathway , Regulation of Actin Filament Polymerization , Hepatitis C, Signaling Events mediated by VEGFR1 and VEGFR2 , Signaling of Hepatocyte Growth Factor Receptor , EGFR Downregulation

Application Details

Application Notes:	WB: 1:1000. WB: 1:1000. IHC-P: 1:50~100
Restrictions:	For Research Use only

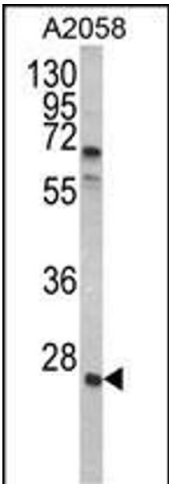
Handling

Format:	Liquid
Buffer:	Purified polyclonal antibody supplied in PBS with 0.09 % (W/V) sodium azide.
Preservative:	Sodium azide
Precaution of Use:	This product contains Sodium azide: a POISONOUS AND HAZARDOUS SUBSTANCE which should be handled by trained staff only.
Storage:	4 °C, -20 °C
Storage Comment:	Maintain refrigerated at 2-8 °C for up to 6 months. For long term storage store at -20 °C in small aliquots to prevent freeze-thaw cycles.
Expiry Date:	6 months



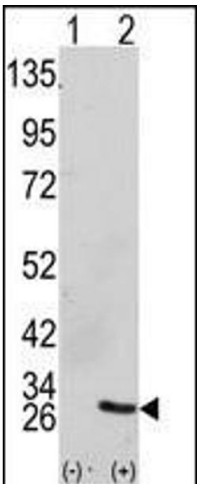
Immunohistochemistry (Paraffin-embedded Sections)

Image 1. Formalin-fixed and paraffin-embedded human brain tissue reacted with GRB2 antibody (Center), which was peroxidase-conjugated to the secondary antibody, followed by DAB staining. This data demonstrates the use of this antibody for immunohistochemistry, clinical relevance has not been evaluated.



Western Blotting

Image 2. Western blot analysis of GRB2 Antibody (Center) (ABIN390238 and ABIN2840708) in cell line lysates (35 μ g/lane). GRB2 (arrow) was detected using the purified Pab.



Western Blotting

Image 3. Western blot analysis of GRB2 (arrow) using GRB2 Antibody (Center) (ABIN390238 and ABIN2840708). 293 cell lysates (2 μ g/lane) either nontransfected (Lane 1) or transiently transfected with the GRB2 gene (Lane 2) (Origene Technologies).