

Datasheet for ABIN390244  
**anti-MEF2C antibody (AA 365-394)**[Go to Product page](#)

## 3 Images

## Overview

Quantity:	400 µL
Target:	MEF2C
Binding Specificity:	AA 365-394
Reactivity:	Human, Mouse
Host:	Rabbit
Clonality:	Polyclonal
Conjugate:	This MEF2C antibody is un-conjugated
Application:	Western Blotting (WB), Immunofluorescence (IF), Immunohistochemistry (Paraffin-embedded Sections) (IHC (p))

## Product Details

Immunogen:	This MEF2C antibody is generated from rabbits immunized with a KLH conjugated synthetic peptide between 365-394 amino acids from human MEF2C.
Clone:	RB11087
Isotype:	Ig Fraction
Predicted Reactivity:	Pig, Rat
Purification:	This antibody is purified through a protein A column, followed by peptide affinity purification.

## Target Details

Target:	MEF2C
---------	-------

## Target Details

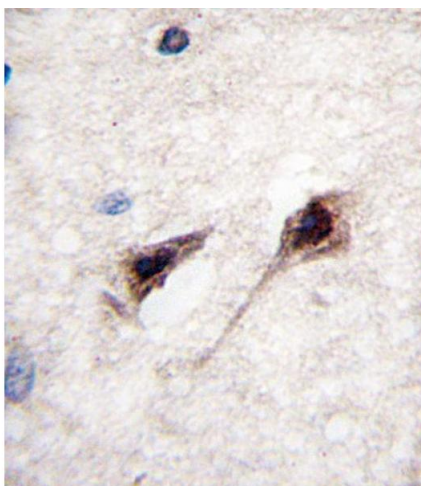
Alternative Name:	MEF2C ( <a href="#">MEF2C Products</a> )
Background:	MEF2C is a transcription activator which binds specifically to the MEF2 element present in the regulatory regions of many muscle-specific genes. This protein controls cardiac morphogenesis and myogenesis, and is also involved in vascular development. It may also be involved in neurogenesis and in the development of cortical architecture.
Molecular Weight:	51221
Gene ID:	4208
NCBI Accession:	<a href="#">NP_001124477</a> , <a href="#">NP_001180276</a> , <a href="#">NP_001180277</a> , <a href="#">NP_001180278</a> , <a href="#">NP_001180279</a> , <a href="#">NP_002388</a>
UniProt:	<a href="#">Q06413</a>
Pathways:	<a href="#">Neurotrophin Signaling Pathway</a> , <a href="#">Activation of Innate immune Response</a> , <a href="#">Cellular Response to Molecule of Bacterial Origin</a> , <a href="#">Carbohydrate Homeostasis</a> , <a href="#">Chromatin Binding</a> , <a href="#">Regulation of Muscle Cell Differentiation</a> , <a href="#">Skeletal Muscle Fiber Development</a> , <a href="#">Toll-Like Receptors Cascades</a> , <a href="#">BCR Signaling</a>

## Application Details

Application Notes:	IF: 1:10~50. WB: 1:1000-2000. IHC-P: 1:10~50
Restrictions:	For Research Use only

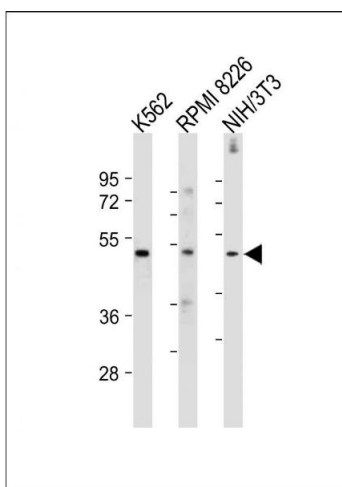
## Handling

Format:	Liquid
Buffer:	Purified polyclonal antibody supplied in PBS with 0.09 % (W/V) sodium azide.
Preservative:	Sodium azide
Precaution of Use:	This product contains Sodium azide: a POISONOUS AND HAZARDOUS SUBSTANCE which should be handled by trained staff only.
Storage:	4 °C, -20 °C
Storage Comment:	Maintain refrigerated at 2-8 °C for up to 6 months. For long term storage store at -20 °C in small aliquots to prevent freeze-thaw cycles.
Expiry Date:	6 months



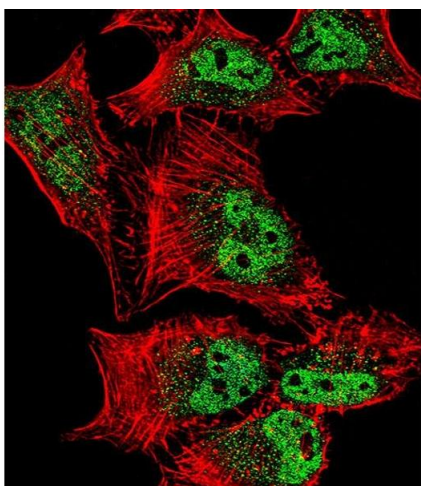
### Immunohistochemistry (Paraffin-embedded Sections)

**Image 1.** Formalin-fixed and paraffin-embedded human brain tissue reacted with MEF2C Antibody (ABIN390244 and ABIN2840710), which was peroxidase-conjugated to the secondary antibody, followed by DAB staining. This data demonstrates the use of this antibody for immunohistochemistry, clinical relevance has not been evaluated.



### Western Blotting

**Image 2.** All lanes : Anti-MEF2C-p. ctrl at 1:1000-2000 dilution Lane 1: K562 whole cell lysate Lane 2: RI 8226 whole cell lysate Lane 3: NIH/3T3 whole cell lysate Lysates/proteins at 20 µg per lane. Secondary Goat Anti-Rabbit IgG, (H+L), Peroxidase conjugated at 1/10000 dilution. Predicted band size : 51 kDa Blocking/Dilution buffer: 5 % NFDM/TBST.



### Immunofluorescence

**Image 3.** Fluorescent confocal image of HeLa cell stained with MEF2C Antibody (ABIN390244 and ABIN2840710). HeLa cells were fixed with 4 % PFA (20 min), permeabilized with Triton X-100 (0.1 %, 10 min), then incubated with MEF2C primary antibody (1:25, 1 h at 37 °C). For secondary antibody, Alexa Fluor® 488 conjugated donkey anti-rabbit antibody (green) was used (1:400, 50 min at 37 °C). Cytoplasmic actin was counterstained with Alexa Fluor® 555 (red) conjugated Phalloidin (7 units/mL, 1 h at 37 °C). Nuclei were counterstained with DAPI (blue) (10 µg/mL, 10 min). MEF2C immunoreactivity is localized to vesicles and Nucleus significantly.