

Datasheet for ABIN390247  
**anti-MEF2C antibody (AA 278-307)**



[Go to Product page](#)

2 Images

## Overview

Quantity:	400 µL
Target:	MEF2C
Binding Specificity:	AA 278-307
Reactivity:	Human
Host:	Rabbit
Clonality:	Polyclonal
Conjugate:	This MEF2C antibody is un-conjugated
Application:	Western Blotting (WB), Immunohistochemistry (Paraffin-embedded Sections) (IHC (p))

## Product Details

Immunogen:	This MEF2C antibody is generated from rabbits immunized with a KLH conjugated synthetic peptide between 278-307 amino acids from human MEF2C.
Clone:	RB11009
Isotype:	Ig Fraction
Predicted Reactivity:	B, M, Pig, Rat
Purification:	This antibody is purified through a protein A column, followed by peptide affinity purification.

## Target Details

Target:	MEF2C
Alternative Name:	MEF2C ( <a href="#">MEF2C Products</a> )

## Target Details

---

Background:	MEF2C is a transcription activator which binds specifically to the MEF2 element present in the regulatory regions of many muscle-specific genes. This protein controls cardiac morphogenesis and myogenesis, and is also involved in vascular development. It may also be involved in neurogenesis and in the development of cortical architecture.
Molecular Weight:	51221
Gene ID:	4208
NCBI Accession:	<a href="#">NP_001124477</a> , <a href="#">NP_001180276</a> , <a href="#">NP_001180277</a> , <a href="#">NP_001180278</a> , <a href="#">NP_001180279</a> , <a href="#">NP_002388</a>
UniProt:	<a href="#">Q06413</a>
Pathways:	<a href="#">Neurotrophin Signaling Pathway</a> , <a href="#">Activation of Innate immune Response</a> , <a href="#">Cellular Response to Molecule of Bacterial Origin</a> , <a href="#">Carbohydrate Homeostasis</a> , <a href="#">Chromatin Binding</a> , <a href="#">Regulation of Muscle Cell Differentiation</a> , <a href="#">Skeletal Muscle Fiber Development</a> , <a href="#">Toll-Like Receptors Cascades</a> , <a href="#">BCR Signaling</a>

## Application Details

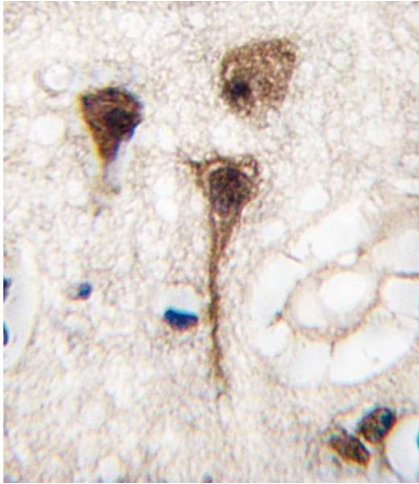
---

Application Notes:	WB: 1:1000. IHC-P: 1:10~50
Restrictions:	For Research Use only

## Handling

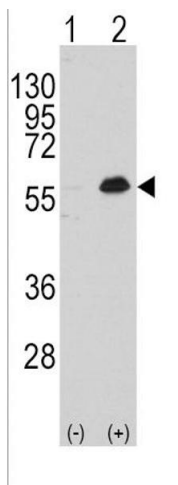
---

Format:	Liquid
Buffer:	Purified polyclonal antibody supplied in PBS with 0.09 % (W/V) sodium azide.
Preservative:	Sodium azide
Precaution of Use:	This product contains Sodium azide: a POISONOUS AND HAZARDOUS SUBSTANCE which should be handled by trained staff only.
Storage:	4 °C,-20 °C
Storage Comment:	Maintain refrigerated at 2-8 °C for up to 6 months. For long term storage store at -20 °C in small aliquots to prevent freeze-thaw cycles.
Expiry Date:	6 months



### Immunohistochemistry (Paraffin-embedded Sections)

**Image 1.** Formalin-fixed and paraffin-embedded human brain tissue reacted with MEF2C Antibody, which was peroxidase-conjugated to the secondary antibody, followed by DAB staining. This data demonstrates the use of this antibody for immunohistochemistry, clinical relevance has not been evaluated.



### Western Blotting

**Image 2.** Western blot analysis of MEF2C (arrow) using rabbit polyclonal MEF2C Antibody (R). 293 cell lysates (2  $\mu$ g/lane) either nontransfected (Lane 1) or transiently transfected with the MEF2C gene (Lane 2) (Origene Technologies).