



[Go to Product page](#)

Datasheet for ABIN390248
anti-PARP6 antibody (C-Term)

2 Images

Overview

Quantity:	400 µL
Target:	PARP6
Binding Specificity:	AA 508-538, C-Term
Reactivity:	Human
Host:	Rabbit
Clonality:	Polyclonal
Conjugate:	This PARP6 antibody is un-conjugated
Application:	Western Blotting (WB)

Product Details

Immunogen:	This Parp6 antibody is generated from rabbits immunized with a KLH conjugated synthetic peptide between 508-538 amino acids from the C-terminal region of human Parp6.
Clone:	RB14170
Isotype:	Ig Fraction
Predicted Reactivity:	M
Purification:	This antibody is prepared by Saturated Ammonium Sulfate (SAS) precipitation followed by dialysis against PBS.

Target Details

Target:	PARP6
---------	-------

Target Details

Alternative Name: [Parp6 \(PARP6 Products\)](#)

Background: Poly(ADP-ribosyl)ation is an immediate DNA-damage-dependent post-translational modification of histones and other nuclear proteins that contributes to the survival of injured proliferating cells. Poly(ADP-ribose) polymerases (PARPs) now constitute a large family of 18 proteins, encoded by different genes and displaying a conserved catalytic domain in which PARP-1 (113 kDa), the founding member, and PARP-2 (62 kDa) are so far the sole enzymes whose catalytic activity has been shown to be immediately stimulated by DNA strand breaks. A large repertoire of sequences encoding novel PARPs now extends considerably the field of poly(ADP-ribosyl)ation reactions to various aspects of the cell biology including cell proliferation and cell death. Some of these new members interact with each other, share common partners and common subcellular localizations suggesting possible fine tuning in the regulation of this post-translational modification of proteins.

Molecular Weight: 71115

Gene ID: 56965

NCBI Accession: [NP_064599](#)

UniProt: [Q2NL67](#)

Application Details

Application Notes: WB: 1:1000. WB: 1:1000

Restrictions: For Research Use only

Handling

Format: Liquid

Buffer: Purified polyclonal antibody supplied in PBS with 0.09 % (W/V) sodium azide.

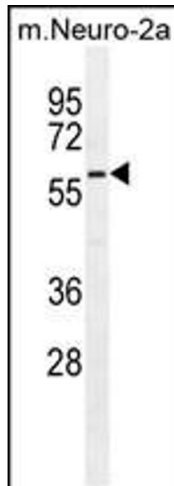
Preservative: Sodium azide

Precaution of Use: This product contains Sodium azide: a POISONOUS AND HAZARDOUS SUBSTANCE which should be handled by trained staff only.

Storage: 4 °C, -20 °C

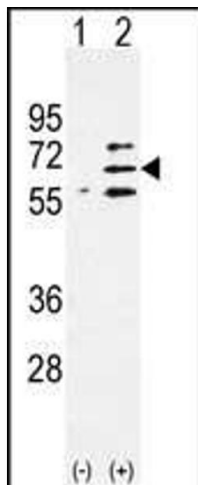
Storage Comment: Maintain refrigerated at 2-8 °C for up to 6 months. For long term storage store at -20 °C in small aliquots to prevent freeze-thaw cycles.

Expiry Date: 6 months



Western Blotting

Image 1. Parp6 Antibody (C-term) (ABIN390248 and ABIN2840713) western blot analysis in mouse Neuro-2a cell line lysates (35 µg/lane). This demonstrates the Parp6 antibody detected the Parp6 protein (arrow).



Western Blotting

Image 2. Western blot analysis of Parp6 (arrow) using rabbit polyclonal Parp6 Antibody (C-term) (ABIN390248 and ABIN2840713). 293 cell lysates (2 µg/lane) either nontransfected (Lane 1) or transiently transfected (Lane 2) with the Parp6 gene.