

Datasheet for ABIN390282
anti-APP antibody (N-Term)



[Go to Product page](#)

3 Images

Overview

Quantity:	400 µL
Target:	APP
Binding Specificity:	AA 29-61, N-Term
Reactivity:	Mouse
Host:	Rabbit
Clonality:	Polyclonal
Conjugate:	This APP antibody is un-conjugated
Application:	Western Blotting (WB), Immunohistochemistry (Paraffin-embedded Sections) (IHC (p)), Flow Cytometry (FACS)

Product Details

Immunogen:	This APP antibody is generated from rabbits immunized with a KLH conjugated synthetic peptide between 29-61 amino acids from the N-terminal region of human APP.
Clone:	RB5012
Isotype:	Ig Fraction
Predicted Reactivity:	Pr
Purification:	This antibody is purified through a protein A column, followed by peptide affinity purification.

Target Details

Target:	APP
---------	-----

Target Details

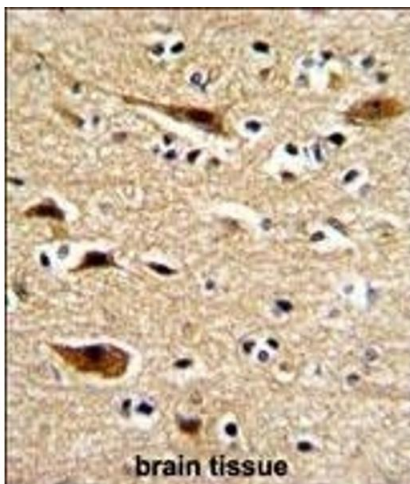
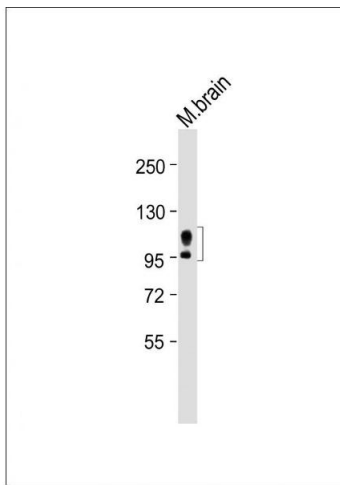
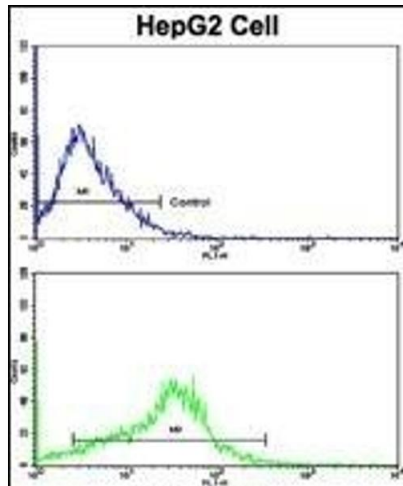
Alternative Name:	APP (APP Products)
Background:	APP is a cell surface receptor and transmembrane precursor protein that is cleaved by secretases to form a number of peptides. Some of these peptides are secreted and can bind to the acetyltransferase complex APBB1/TIP60 to promote transcriptional activation, while others form the protein basis of the amyloid plaques found in the brains of patients with Alzheimer disease. Mutations in this gene have been implicated in autosomal dominant Alzheimer disease and cerebroarterial amyloidosis (cerebral amyloid angiopathy).
Molecular Weight:	86943
Gene ID:	351
NCBI Accession:	NP_000475 , NP_001129488 , NP_001129601 , NP_001129602 , NP_001129603 , NP_001191230 , NP_001191231 , NP_001191232 , NP_958816 , NP_958817
UniProt:	P05067
Pathways:	Caspase Cascade in Apoptosis , EGFR Signaling Pathway , Transition Metal Ion Homeostasis , Skeletal Muscle Fiber Development , Toll-Like Receptors Cascades , Feeding Behaviour

Application Details

Application Notes:	WB: 1:2000. IHC-P: 1:10~50. FC: 1:10~50
Restrictions:	For Research Use only

Handling

Format:	Liquid
Buffer:	Purified polyclonal antibody supplied in PBS with 0.09 % (W/V) sodium azide.
Preservative:	Sodium azide
Precaution of Use:	This product contains Sodium azide: a POISONOUS AND HAZARDOUS SUBSTANCE which should be handled by trained staff only.
Storage:	4 °C,-20 °C
Storage Comment:	Maintain refrigerated at 2-8 °C for up to 6 months. For long term storage store at -20 °C in small aliquots to prevent freeze-thaw cycles.
Expiry Date:	6 months



Flow Cytometry

Image 1. Flow cytometric analysis of HepG2 cells using P Antibody (N-term)(bottom histogram) compared to a negative control cell (top histogram). FITC-conjugated goat-anti-rabbit secondary antibodies were used for the analysis.

Western Blotting

Image 2. Anti-hP-H44 at 1:1000 dilution + Mouse brain whole tissue lysate Lysates/proteins at 20 µg per lane. Secondary Goat Anti-Rabbit IgG, (H+L), Peroxidase conjugated at 1/10000 dilution. Predicted band size : 87 kDa Blocking/Dilution buffer: 5 % NFDm/TBST.

Immunohistochemistry (Paraffin-embedded Sections)

Image 3. Formalin-fixed and paraffin-embedded human brain with P Antibody (N-term), which was peroxidase-conjugated to the secondary antibody, followed by DAB staining. This data demonstrates the use of this antibody for immunohistochemistry, clinical relevance has not been evaluated.