

Datasheet for ABIN390286
anti-HSD17B10 antibody (C-Term)[Go to Product page](#)

3 Images

Overview

Quantity:	400 µL
Target:	HSD17B10
Binding Specificity:	AA 199-235, C-Term
Reactivity:	Human, Mouse
Host:	Rabbit
Clonality:	Polyclonal
Conjugate:	This HSD17B10 antibody is un-conjugated
Application:	Western Blotting (WB), Immunohistochemistry (Paraffin-embedded Sections) (IHC (p))

Product Details

Immunogen:	This ABAD antibody is generated from rabbits immunized with a KLH conjugated synthetic peptide between 199-235 amino acids from the C-terminal region of human ABAD.
Clone:	RB6481
Isotype:	Ig Fraction
Predicted Reactivity:	B, Rat
Purification:	This antibody is purified through a protein A column, followed by peptide affinity purification.

Target Details

Target:	HSD17B10
Alternative Name:	ABAD (HSD17B10 Products)

Target Details

Background: Amyloid b-peptide-binding alcohol dehydrogenase (ABAD) is a member of the family of short chain dehydrogenase/reductases, unique among this family, it binds amyloid b-peptide and exhibits enzymatic activity toward a wide variety of substrates including linear alcohols. In an amyloid beta-abundant environment, ABAD appears to trigger cell stress induced by the amyloid peptide.

Gene ID: 3028

UniProt: [Q6IBS9](#)

Application Details

Application Notes: WB: 1:1000. WB: 1:1000. IHC-P: 1:50~100

Restrictions: For Research Use only

Handling

Format: Liquid

Buffer: Purified polyclonal antibody supplied in PBS with 0.09 % (W/V) sodium azide.

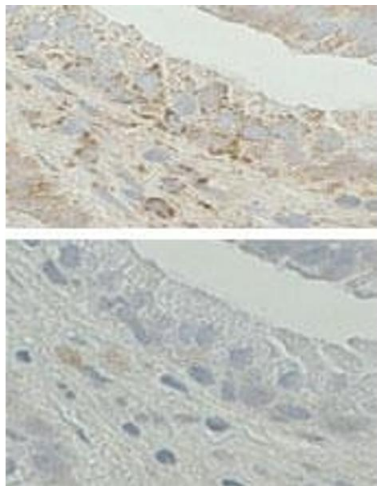
Preservative: Sodium azide

Precaution of Use: This product contains Sodium azide: a POISONOUS AND HAZARDOUS SUBSTANCE which should be handled by trained staff only.

Storage: 4 °C,-20 °C

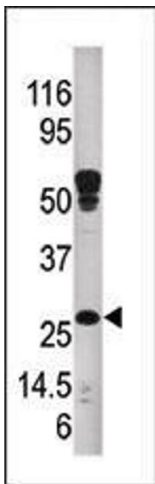
Storage Comment: Maintain refrigerated at 2-8 °C for up to 6 months. For long term storage store at -20 °C in small aliquots to prevent freeze-thaw cycles.

Expiry Date: 6 months



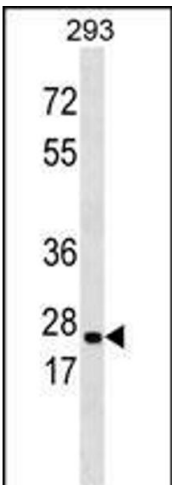
Immunohistochemistry (Paraffin-embedded Sections)

Image 1. Immunohistochemistry on Formalin-fixed and paraffin-embedded human prostate tissue. (Top)Coloration with the Anti-ABAD antibody at a 1:20 concentration. (Bottom)Antibody adsorbed to the antigen (peptide), negative control.Disappearance of cytoplasmic staining indicating the antibody is specific. Data and protocol courtesy of Marie-Hélène Levesque, Centre de Recherche du CHUL, Canada.



Western Blotting

Image 2. Western blot analysis of anti-ABAD Pab (ABIN390286 and ABIN2850545) in mouse kidney tissue lysate.ABAD(arrow) was detected using the purified Pab.



Western Blotting

Image 3. ABAD Antibody (ABIN390286 and ABIN2850545) western blot analysis in 293 cell line lysates (35 µg/lane).This demonstrates the ABAD antibody detected the ABAD protein (arrow).