

Datasheet for ABIN390289
anti-Claudin 1 antibody (AA 40-82)[Go to Product page](#)

2 Images

Overview

Quantity:	400 µL
Target:	Claudin 1 (CLDN1)
Binding Specificity:	AA 40-82
Reactivity:	Human
Host:	Rabbit
Clonality:	Polyclonal
Conjugate:	This Claudin 1 antibody is un-conjugated
Application:	Western Blotting (WB), Immunohistochemistry (Paraffin-embedded Sections) (IHC (p))

Product Details

Immunogen:	This Claudin 1 (CLDN1) antibody is generated from rabbits immunized with a KLH conjugated synthetic peptide between 40-82 amino acids from human Claudin 1 (CLDN1).
Clone:	RB13129
Isotype:	Ig Fraction
Purification:	This antibody is prepared by Saturated Ammonium Sulfate (SAS) precipitation followed by dialysis against PBS.

Target Details

Target:	Claudin 1 (CLDN1)
Abstract:	CLDN1 Products

Target Details

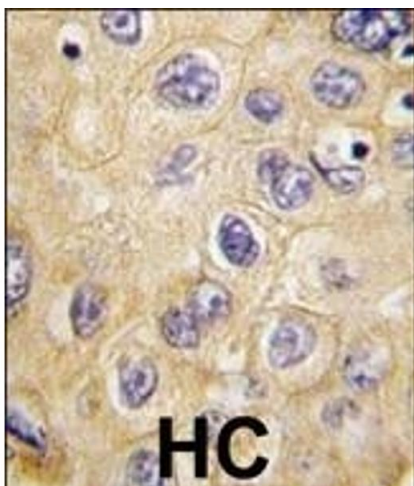
Background:	Tight junctions represent one mode of cell-to-cell adhesion in epithelial or endothelial cell sheets, forming continuous seals around cells and serving as a physical barrier to prevent solutes and water from passing freely through the paracellular space. These junctions are comprised of sets of continuous networking strands in the outwardly facing cytoplasmic leaflet, with complementary grooves in the inwardly facing extracytoplasmic leaflet. CLDN1, a member of the claudin family, is an integral membrane protein and a component of tight junction strands. Loss of function mutations result in neonatal ichthyosis-sclerosing cholangitis syndrome.
Molecular Weight:	22744
Gene ID:	9076
NCBI Accession:	NP_066924
UniProt:	O95832
Pathways:	Cell-Cell Junction Organization , Hepatitis C

Application Details

Application Notes:	WB: 1:1000. IHC-P: 1:10~50
Restrictions:	For Research Use only

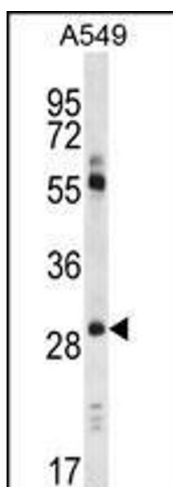
Handling

Format:	Liquid
Buffer:	Purified polyclonal antibody supplied in PBS with 0.09 % (W/V) sodium azide.
Preservative:	Sodium azide
Precaution of Use:	This product contains Sodium azide: a POISONOUS AND HAZARDOUS SUBSTANCE which should be handled by trained staff only.
Storage:	4 °C, -20 °C
Storage Comment:	Maintain refrigerated at 2-8 °C for up to 6 months. For long term storage store at -20 °C in small aliquots to prevent freeze-thaw cycles.
Expiry Date:	6 months



Immunohistochemistry (Paraffin-embedded Sections)

Image 1. Formalin-fixed and paraffin-embedded human hepatocarcinoma tissue reacted with hCLDN1-Loop1 (ABIN390289 and ABIN2840728), which was peroxidase-conjugated to the secondary antibody, followed by DAB staining. This data demonstrates the use of this antibody for immunohistochemistry, clinical relevance has not been evaluated.



Western Blotting

Image 2. CLDN1 Antibody (Loop1) (ABIN390289 and ABIN2840728) western blot analysis in A549 cell line lysates (35 µg/lane). This demonstrates the CLDN1 antibody detected the CLDN1 protein (arrow).