



[Go to Product page](#)

Datasheet for ABIN390290

anti-Claudin 1 antibody (AA 122-163)

2 Images

Overview

Quantity:	400 µL
Target:	Claudin 1 (CLDN1)
Binding Specificity:	AA 122-163
Reactivity:	Human, Mouse
Host:	Rabbit
Clonality:	Polyclonal
Conjugate:	This Claudin 1 antibody is un-conjugated
Application:	Western Blotting (WB)

Product Details

Immunogen:	This Claudin 1(CLDN1) antibody is generated from rabbits immunized with a KLH conjugated synthetic peptide between 122-163 amino acids from human Claudin 1(CLDN1).
Clone:	RB13131
Isotype:	Ig Fraction
Predicted Reactivity:	B, Rat
Purification:	This antibody is prepared by Saturated Ammonium Sulfate (SAS) precipitation followed by dialysis against PBS.

Target Details

Target:	Claudin 1 (CLDN1)
---------	-------------------

Target Details

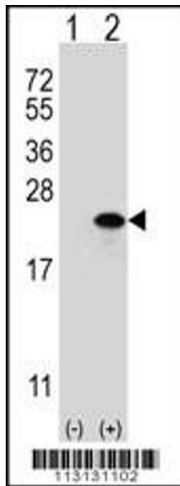
Abstract:	CLDN1 Products
Background:	CLDN1, a member of the claudin family, is an integral membrane protein and a component of tight junction strands. Tight junctions represent one mode of cell-to-cell adhesion in epithelial or endothelial cell sheets, forming continuous seals around cells and serving as a physical barrier to prevent solutes and water from passing freely through the paracellular space. These junctions are comprised of sets of continuous networking strands in the outwardly facing cytoplasmic leaflet, with complementary grooves in the inwardly facing extracytoplasmic leaflet. Loss of function mutations result in neonatal ichthyosis-sclerosing cholangitis syndrome.
Molecular Weight:	22744
Gene ID:	9076
NCBI Accession:	NP_066924
UniProt:	O95832
Pathways:	Cell-Cell Junction Organization , Hepatitis C

Application Details

Application Notes:	WB: 1:1000. WB: 1:1000
Restrictions:	For Research Use only

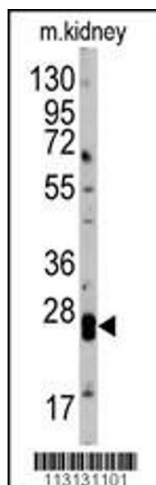
Handling

Format:	Liquid
Buffer:	Purified polyclonal antibody supplied in PBS with 0.09 % (W/V) sodium azide.
Preservative:	Sodium azide
Precaution of Use:	This product contains Sodium azide: a POISONOUS AND HAZARDOUS SUBSTANCE which should be handled by trained staff only.
Storage:	4 °C,-20 °C
Storage Comment:	Maintain refrigerated at 2-8 °C for up to 6 months. For long term storage store at -20 °C in small aliquots to prevent freeze-thaw cycles.
Expiry Date:	6 months



Western Blotting

Image 1. Western blot analysis of CLDN1 (arrow) using rabbit polyclonal CLDN1 Antibody (Loop2) (ABIN390290 and ABIN2840729). 293 cell lysates (2 µg/lane) either nontransfected (Lane 1) or transiently transfected (Lane 2) with the CLDN1 gene.



Western Blotting

Image 2. Western blot analysis of anti-hCLDN1-Loop2 Pab (ABIN390290 and ABIN2840729) in mouse kidney tissue lysates (35 µg/lane). CLDN1 (arrow) was detected using the purified Pab.