

Datasheet for ABIN390295
anti-SPPL2A antibody (N-Term)[Go to Product page](#)

2 Images

Overview

Quantity:	400 µL
Target:	SPPL2A
Binding Specificity:	AA 108-138, N-Term
Reactivity:	Human
Host:	Rabbit
Clonality:	Polyclonal
Conjugate:	This SPPL2A antibody is un-conjugated
Application:	Western Blotting (WB), Immunohistochemistry (Paraffin-embedded Sections) (IHC (p))

Product Details

Immunogen:	This SPPL2a antibody is generated from rabbits immunized with a KLH conjugated synthetic peptide between 108-138 amino acids from the N-terminal region of human SPPL2a.
Clone:	RB2267
Isotype:	Ig Fraction
Purification:	This antibody is prepared by Saturated Ammonium Sulfate (SAS) precipitation followed by dialysis against PBS.

Target Details

Target:	SPPL2A
Alternative Name:	SPPL2a (SPPL2A Products)

Target Details

Background: By searching sequence databases for homologs of Dictyostelium discoideum Impas, which shares homology with presenilin, followed by PCR of lymphocyte and hippocampus cDNA libraries, Grigorenko et al. (2002) cloned SPPL2a. This protein, which may act as an intramembrane protease, contains an N-terminal protease-associated (PA) domain, several transmembrane regions, a hydrophilic loop, conservative sequences around the first and second aspartate residues, and an invariant PAL motif near the C terminus.

Molecular Weight: 58143

Gene ID: 84888

NCBI Accession: [NP_116191](#)

UniProt: [Q8TCT8](#)

Application Details

Application Notes: WB: 1:1000. IHC-P: 1:10~50

Restrictions: For Research Use only

Handling

Format: Liquid

Buffer: Purified polyclonal antibody supplied in PBS with 0.09 % (W/V) sodium azide.

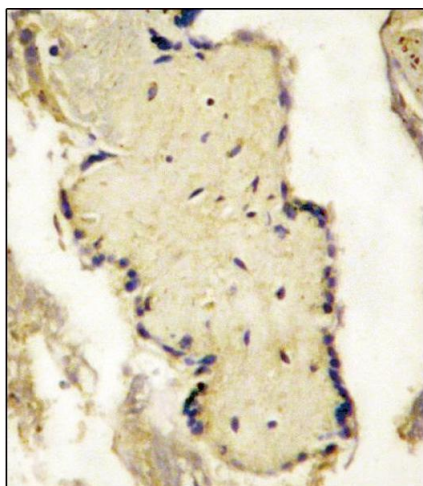
Preservative: Sodium azide

Precaution of Use: This product contains Sodium azide: a POISONOUS AND HAZARDOUS SUBSTANCE which should be handled by trained staff only.

Storage: 4 °C, -20 °C

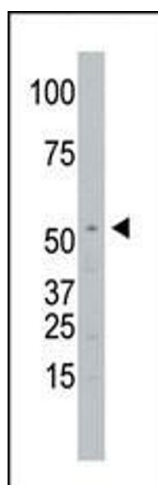
Storage Comment: Maintain refrigerated at 2-8 °C for up to 6 months. For long term storage store at -20 °C in small aliquots to prevent freeze-thaw cycles.

Expiry Date: 6 months



Immunohistochemistry (Paraffin-embedded Sections)

Image 1. Formalin-fixed and paraffin-embedded placenta tissue reacted with SL2a Antibody (N-term) (ABIN390295 and ABIN2840733) , which was peroxidase-conjugated to the secondary antibody, followed by DAB staining. This data demonstrates the use of this antibody for immunohistochemistry, clinical relevance has not been evaluated.



Western Blotting

Image 2. The anti-SL2a Pab (ABIN390295 and ABIN2840733) is used in Western blot to detect SL2a in Jurkat cell lysate.