

Datasheet for ABIN390304
anti-Kallikrein 4 antibody (AA 85-115)[Go to Product page](#)

2 Images

Overview

Quantity:	400 µL
Target:	Kallikrein 4 (KLK4)
Binding Specificity:	AA 85-115
Reactivity:	Human, Mouse
Host:	Rabbit
Clonality:	Polyclonal
Conjugate:	This Kallikrein 4 antibody is un-conjugated
Application:	Western Blotting (WB)

Product Details

Immunogen:	This Kallikrein 4 (KLK4) antibody is generated from rabbits immunized with a KLH conjugated synthetic peptide between 85-115 amino acids from the Central region of human Kallikrein 4 (KLK4).
Clone:	RB6105
Isotype:	Ig Fraction
Purification:	This antibody is prepared by Saturated Ammonium Sulfate (SAS) precipitation followed by dialysis against PBS.

Target Details

Target:	Kallikrein 4 (KLK4)
Alternative Name:	Kallikrein 4 (KLK4) (KLK4 Products)

Target Details

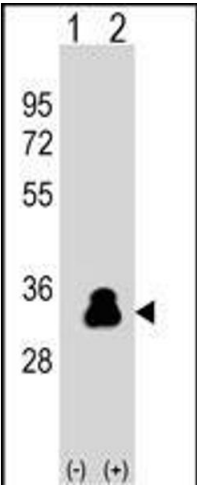
Background:	Kallikreins are a subgroup of serine proteases having diverse physiological functions. Growing evidence suggests that many kallikreins are implicated in carcinogenesis and some have potential as novel cancer and other disease biomarkers. In some tissues KLK4 expression is hormonally regulated. The expression pattern of a similar mouse protein in murine developing teeth supports a role for the protein in the degradation of enamel proteins.
Molecular Weight:	27032
Gene ID:	9622
NCBI Accession:	NP_004908
UniProt:	Q9Y5K2
Pathways:	Complement System

Application Details

Application Notes:	WB: 1:1000. WB: 1:1000
Restrictions:	For Research Use only

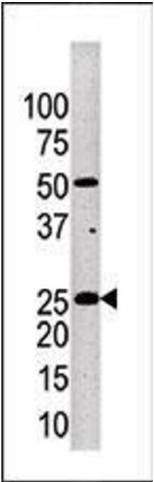
Handling

Format:	Liquid
Buffer:	Purified polyclonal antibody supplied in PBS with 0.09 % (W/V) sodium azide.
Preservative:	Sodium azide
Precaution of Use:	This product contains Sodium azide: a POISONOUS AND HAZARDOUS SUBSTANCE which should be handled by trained staff only.
Storage:	4 °C, -20 °C
Storage Comment:	Maintain refrigerated at 2-8 °C for up to 6 months. For long term storage store at -20 °C in small aliquots to prevent freeze-thaw cycles.
Expiry Date:	6 months



Western Blotting

Image 1. Western blot analysis of KLK4 (arrow) using rabbit polyclonal KLK4 Antibody (ABIN390304 and ABIN2840739). 293 cell lysates (2 µg/lane) either nontransfected (Lane 1) or transiently transfected (Lane 2) with the KLK4 gene.



Western Blotting

Image 2. Western blot analysis of anti-KLK4 Pab (ABIN390304 and ABIN2840739) in mouse brain tissue lysate. KLK4 (arrow) was detected using the purified Pab.