

Datasheet for ABIN390305

anti-Kallikrein 5 antibody (AA 144-174)**2** Images**1** Publication[Go to Product page](#)

Overview

Quantity:	400 µL
Target:	Kallikrein 5 (KLK5)
Binding Specificity:	AA 144-174
Reactivity:	Human, Mouse
Host:	Rabbit
Clonality:	Polyclonal
Conjugate:	This Kallikrein 5 antibody is un-conjugated
Application:	Western Blotting (WB)

Product Details

Immunogen:	This Kallikrein 5 antibody is generated from rabbits immunized with a KLH conjugated synthetic peptide between 144-174 amino acids from the Central region of human Kallikrein 5.
Clone:	RB6112
Isotype:	Ig Fraction
Purification:	This antibody is prepared by Saturated Ammonium Sulfate (SAS) precipitation followed by dialysis against PBS.

Target Details

Target:	Kallikrein 5 (KLK5)
Abstract:	KLK5 Products

Target Details

Background:	Kallikreins are a subgroup of serine proteases having diverse physiological functions. Growing evidence suggests that many kallikreins are implicated in carcinogenesis and some have potential as novel cancer and other disease biomarkers. KLK5 expression is up-regulated by estrogens and progestins. The protein is secreted and may be involved in desquamation in the epidermis.
Molecular Weight:	32020
Gene ID:	25818
NCBI Accession:	NP_001070959 , NP_001070960 , NP_036559
UniProt:	Q9Y337
Pathways:	Complement System , Regulation of G-Protein Coupled Receptor Protein Signaling

Application Details

Application Notes:	WB: 1:1000. WB: 1:1000
Restrictions:	For Research Use only

Handling

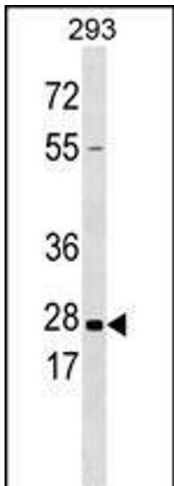
Format:	Liquid
Buffer:	Purified polyclonal antibody supplied in PBS with 0.09 % (W/V) sodium azide.
Preservative:	Sodium azide
Precaution of Use:	This product contains Sodium azide: a POISONOUS AND HAZARDOUS SUBSTANCE which should be handled by trained staff only.
Storage:	4 °C, -20 °C
Storage Comment:	Maintain refrigerated at 2-8 °C for up to 6 months. For long term storage store at -20 °C in small aliquots to prevent freeze-thaw cycles.
Expiry Date:	6 months

Publications

Product cited in:	Sharma, Åkerström, Sharma, Chow, Teow, Abrenica, Booth, Booth, Mirazimi, Lal: "SARS-CoV 9b protein diffuses into nucleus, undergoes active Crm1 mediated nucleocytoplasmic export and triggers apoptosis when retained in the nucleus." in: PLoS ONE , Vol. 6, Issue 5, pp. e19436, (
-------------------	--

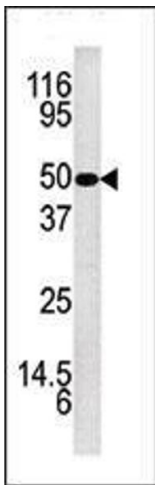
2011) ([PubMed](#)).

Images



Western Blotting

Image 1. KLK5 Antibody (ABIN390305 and ABIN2840740) western blot analysis in 293 cell line lysates (35 μ g/lane). This demonstrates the KLK5 antibody detected the KLK5 protein (arrow).



Western Blotting

Image 2. Western blot analysis of anti-KLK5 Pab (ABIN390305 and ABIN2840740) in mouse brain tissue lysate. KLK5 (arrow) was detected using the purified Pab.