

Datasheet for ABIN390354
anti-Glypican 6 antibody (N-Term)[Go to Product page](#)

1 Image

Overview

| | |
|----------------------|---|
| Quantity: | 400 µL |
| Target: | Glypican 6 (GPC6) |
| Binding Specificity: | AA 24-46, N-Term |
| Reactivity: | Human |
| Host: | Rabbit |
| Clonality: | Polyclonal |
| Conjugate: | This Glypican 6 antibody is un-conjugated |
| Application: | Western Blotting (WB) |

Product Details

| | |
|---------------|--|
| Immunogen: | This Glypican 6 (GPC6) antibody is generated from rabbits immunized with a KLH conjugated synthetic peptide between 24-46 amino acids from the N-terminal region of human Glypican 6 (GPC6). |
| Clone: | RB14542 |
| Isotype: | Ig Fraction |
| Purification: | This antibody is prepared by Saturated Ammonium Sulfate (SAS) precipitation followed by dialysis against PBS. |

Target Details

| | |
|-----------|-------------------------------|
| Target: | Glypican 6 (GPC6) |
| Abstract: | GPC6 Products |

Target Details

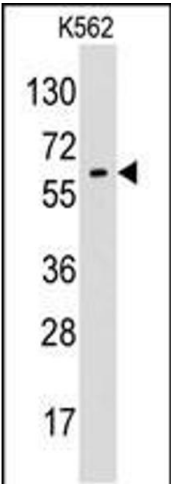
| | |
|-------------------|--|
| Background: | The glypicans comprise a family of glycosylphosphatidylinositol-anchored heparan sulfate proteoglycans. The glypicans have been implicated in the control of cell growth and division. Glypican 6 is a putative cell surface coreceptor for growth factors, extracellular matrix proteins, proteases and anti-proteases. |
| Molecular Weight: | 62736 |
| Gene ID: | 10082 |
| NCBI Accession: | NP_005699 |
| UniProt: | Q9Y625 |
| Pathways: | Glycosaminoglycan Metabolic Process |

Application Details

| | |
|--------------------|-----------------------|
| Application Notes: | WB: 1:1000 |
| Restrictions: | For Research Use only |

Handling

| | |
|--------------------|--|
| Format: | Liquid |
| Buffer: | Purified polyclonal antibody supplied in PBS with 0.09 % (W/V) sodium azide. |
| Preservative: | Sodium azide |
| Precaution of Use: | This product contains Sodium azide: a POISONOUS AND HAZARDOUS SUBSTANCE which should be handled by trained staff only. |
| Storage: | 4 °C,-20 °C |
| Storage Comment: | Maintain refrigerated at 2-8 °C for up to 6 months. For long term storage store at -20 °C in small aliquots to prevent freeze-thaw cycles. |
| Expiry Date: | 6 months |



Western Blotting

Image 1. Western blot analysis of anti-GPC6 Pab (ABIN390354 and ABIN2840766) in K562 cell line lysates (35 µg/lane). GPC6(arrow) was detected using the purified Pab.