



Datasheet for ABIN390365
anti-Parkin antibody (N-Term)



[Go to Product page](#)

2 Images

Overview

Quantity:	400 µL
Target:	Parkin (PARK2)
Binding Specificity:	AA 111-140, N-Term
Reactivity:	Human
Host:	Rabbit
Clonality:	Polyclonal
Conjugate:	This Parkin antibody is un-conjugated
Application:	Western Blotting (WB)

Product Details

Immunogen:	This Parkin antibody is generated from rabbits immunized with a KLH conjugated synthetic peptide between 111-140 amino acids from the N-terminal region of human Parkin.
Clone:	RB7371
Isotype:	Ig Fraction
Purification:	This antibody is purified through a protein A column, followed by peptide affinity purification.

Target Details

Target:	Parkin (PARK2)
Alternative Name:	Parkin (PARK2 Products)
Background:	Parkinson is the second most common neurodegenerative disease after Alzheimers. About 1

Target Details

percent of people over the age of 65 and 3 percent of people over the age of 75 are affected by the disease. The mutation is the most common cause of Parkinson disease identified to date. The function of Park2 is not well-known, however, it may play a role in the ubiquitin-mediated proteolytic pathway. Mutations in this gene are known to cause autosomal recessive juvenile parkinsonism. Alternative splicing of this gene produces three known products of undetermined function.

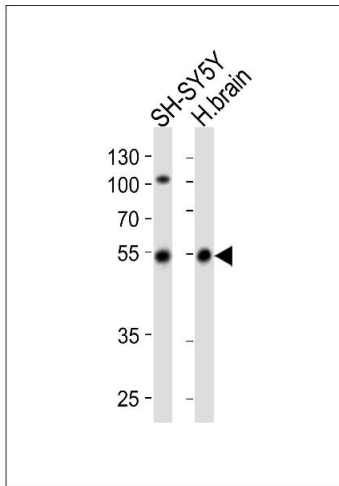
Molecular Weight:	51641
Gene ID:	5071
NCBI Accession:	NP_004553 , NP_054642 , NP_054643
UniProt:	O60260
Pathways:	Autophagy , Ubiquitin Proteasome Pathway

Application Details

Application Notes:	WB: 1:2000. WB: 1:250-1:1000
Restrictions:	For Research Use only

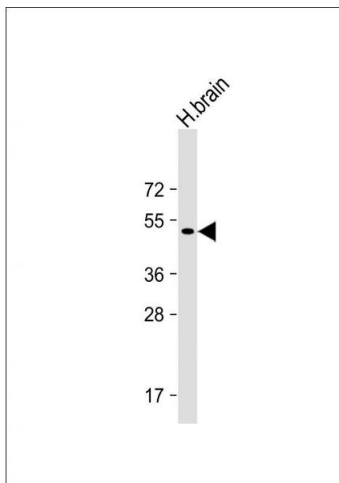
Handling

Format:	Liquid
Buffer:	Purified polyclonal antibody supplied in PBS with 0.09 % (W/V) sodium azide.
Preservative:	Sodium azide
Precaution of Use:	This product contains Sodium azide: a POISONOUS AND HAZARDOUS SUBSTANCE which should be handled by trained staff only.
Storage:	4 °C,-20 °C
Storage Comment:	Maintain refrigerated at 2-8 °C for up to 6 months. For long term storage store at -20 °C in small aliquots to prevent freeze-thaw cycles.
Expiry Date:	6 months



Western Blotting

Image 1. Western blot analysis of lysates from SH-SY5Y cell line, human brain tissue lysate (from left to right), using Park2 Antibody (N-term) (ABIN390365 and ABIN2840771). (ABIN390365 and ABIN2840771) was diluted at 1:1000 at each lane. A goat anti-rabbit IgG H&L(HRP) at 1:10000 dilution was used as the secondary antibody. Lysates at 20 µg per lane.



Western Blotting

Image 2. Anti-Parkin Antibody (N-term) at 1:2000 dilution + H. brain whole cell lysate Lysates/proteins at 20 µg per lane. Secondary Goat Anti-Rabbit IgG, (H+L), Peroxidase conjugated at 1/10000 dilution. Predicted band size : 52 kDa Blocking/Dilution buffer: 5 % NFDN/TBST.